

文化
高雄



2026

APRIL

Kaohsiung Arts and Cultural
EVENTS CALENDAR

*A Time When Money Overflowed in Taiwan,
A Time When Laughter Filled the Air*



Producer Michelle Chu, Baboo Ding

Director Yang Li-Chou

高雄有顆藍寶石

Showtime Taiwan: The Sapphire Show

Releasing April 10

Showtime Taiwan: The Sapphire Show

Through a book, a documentary, and a concert series, audiences are invited to step into the golden age of Kaohsiung's show culture.

The Sapphires Big Cabaret Stage in Kaohsiung stands as a powerful symbol of the city's musical memory and a cultural landmark that carries both the spirit of popular entertainment and the elegance of its era. From the variety show stages of Taiwan's economic boom to today's concert experiences shared by three generations of fans, the Sapphire has witnessed the evolution of Taiwan's pop music and entertainment industry, while also tracing the transformations of Kaohsiung's urban life and cultural landscape.

For many residents of Kaohsiung, the Sapphire is more than just a performance venue. It is a deeply rooted piece of collective memory. Once a stage graced by countless stars, it offered audiences their first close encounters with celebrities and live performances, allowing singing, comedy, and variety shows to flourish with a uniquely Southern Taiwanese charm. This cultural energy, born from everyday life, has shaped a significant chapter in Taiwan's show culture and remains a treasured cultural asset of the city.

Marking the fifth anniversary of the Kaohsiung Music Center in 2026, a special "Sapphire Trilogy" project has been launched, revisiting this shared cultural history through three formats: a concert, a publication, and a documentary. By weaving together live performance, historical preservation, and visual storytelling, *Showtime Taiwan: The Sapphire Show* is reimagined not merely as a symbol of nostalgia, but as a living cultural memory shared by all.

This Mother's Day season, the fifth edition of *The Sapphires Big Cabaret Stage—The Legend of Cabaret* will return to Haiyin Hall. Hosted by Peter Huang, Miao Ke-Li, and Rene Hou, the concert will feature celebrated performers such as Yeh Chi-Tien, Michael Shih, and Lotus Wang. Through music and laughter, the show revives the authentic spirit of the golden era of variety stages, guiding audiences to relive timeless classics and rediscover the joy and vitality embodied by the Sapphire.

In publishing, the Kaohsiung Music Center has partnered with Yuan-Liou Publishing to release the book *Showtime Taiwan: The Sapphire Show*, officially launched in March. Written by Golden Tripod Award-winning author Chiu Tsu-Yin, illustrated by Golden Comic Award-winning artist Sean Chuang, and designed by Golden Butterfly Award-winning designer Yang Chi-Shun, the book draws on extensive archival research and interviews. It compiles materials from over 800 newspaper issues and includes conversations with nearly 30 veteran performers and local elders, meticulously reconstructing the Sapphire's vital place in Taiwan's entertainment history. A themed exhibition of the book, recently held at the Kaohsiung Main Public Library, further guided readers in revisiting the golden age of the city's show culture.

Meanwhile, the documentary *Showtime Taiwan: The Sapphire Show*, directed by Golden Horse Award-winning filmmaker Yang Li-Chou, will be released nationwide on April 10. Through interviews with performers and behind-the-scenes professionals, the film retraces the Sapphire's journey from its rise and glory to its intergenerational legacy, inviting audiences into a dazzling era while revealing the vitality and cultural significance of Taiwan's show tradition. It is not only a record of the past, but also a profound reflection on Taiwan's popular culture.

Kaohsiung is a city shaped by the sea and strengthened by its cultural depth. The story of the Sapphire reminds us that music and performance are more than entertainment. They are vital vessels of shared urban memory. Looking ahead, we will continue to cultivate local culture while connecting with the global stage, ensuring that Taiwan's pop music continues to resonate from Kaohsiung. We warmly invite citizens and visitors alike to step into the history and melodies of Showtime Taiwan: The Sapphire Show, and to experience the cultural energy carried through music.



Formosa

音樂冒險王

親子音樂會

04.11 Sat. – 12 Sun.

Dadong Arts Center

15:30



PROGRAM

Wang I-Yu: *《Beiguan Style Ensemble》*

Lo Leung-Fai: *《Spring》* (Reduced Version)

Ten Yu-Hsien, arr. Lee Che-Yi:
《March "Twatutia"》

Liu Sung-Hui: *《Hakka Music Picture》*
—Double Souna Concerto (excerpt)

Hsieh Hui-Ju: *《Refuting Motion-K26》*
(World Premiere)

Lu Liang-Hui: *《Harvest Festival Dance》*
(excerpt)

Qu Chun-Quan: *《Taiwanese Folk Suite》*
—Mov. V: Dance Song

Chiang Jun: *《Kaohsiung Rhapsody》*
(World Premiere)



Organizers 高雄市政府文化局
Bureau of Cultural Affairs Kaohsiung City Government

財團法人高雄市愛樂文化藝術基金會
Kaohsiung Philharmonic Cultural & Arts Foundation

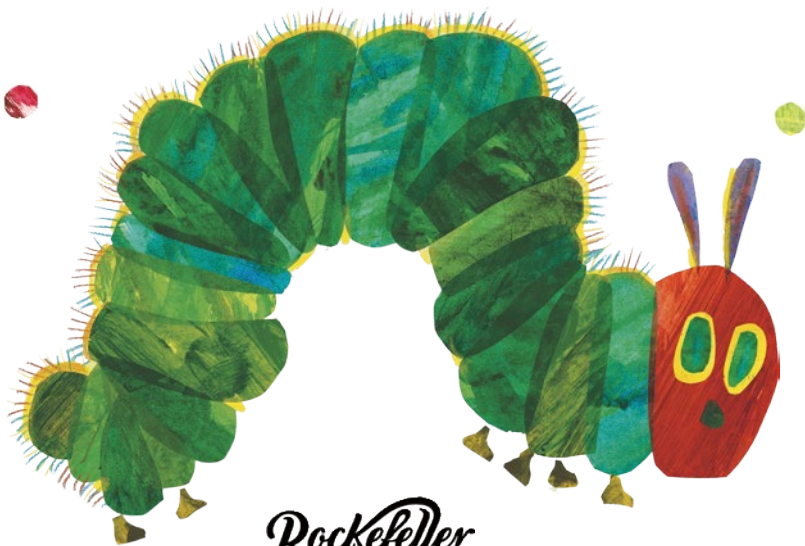
Tickets via OPENTIX
觀 眾 交 流 平 台

Tickets: NT\$ 300 / 500 / 700 / 900
10% off when purchased with a Union Bank of Taiwan credit card (excluding the lowest ticket tier)

Sponsor 黃金盾
HYGIENECARE

The Global Bestseller — Published in 66 Languages
with Over 150 Million Copies Sold.

Official Off-Broadway Production from New York.



Rockefeller

好餓的毛毛蟲秀

THE VERY HUNGRY CATERPILLAR SHOW



10 LITTLE
RUBBER
DUCKS



BROWN
BEAR,
BROWN
BEAR



THE VERY
BUSY
SPIDER

4.18-4.19



Dadong Arts Center

Organizers: IMIC Cultural Media LTD., Center Ring Theatrical

Co-organizers: Bureau of Cultural Affairs, Kaohsiung City Government; Kaohsiung Philharmonic Cultural & Arts Foundation



Sankyokai

日本江戸

歌舞伎
舞踊
邦樂

An Evening of Edo-Period
Japanese Traditional
Arts and Culture

傳統藝能之夜



©松竹株式会社

4. 24 Fri.
19:30

Jihde Hall

Led by a Living National Treasure
A Grand Showcase of Japanese Traditional Performing Arts



Otani
Hiromatsu



Ichinose
Hidekazu



Sasaki
Mitsuyoshi



Otoma
Taisei



Tsuji
Masaru



Kamei
Taichi



Tanaka
Denjiro

Director **Tanaka Denjiro**

Organizers **高雄市政府文化局**
Bureau of Cultural Affairs Kaohsiung City Government

財團法人高雄市愛樂文化藝術基金會
Kaohsiung Philharmonic Cultural & Arts Foundation



Thanks



Tickets: NTS 500, 900, 1200, 1800, 2200, 2600, 3000

10% off when purchased with a Union Bank of Taiwan credit card (excluding the lowest ticket tier.)

More Information



充滿希望的 怪物

物件
劇場

Hopeful Monsters

From the Simplest Creatures to Complex Giants!

The “hands” of artists tell the story of life’s evolution.

A thoughtfully crafted family theater production

exploring the origins of life.

4/25 & 26
Sat. Sun.
10:30 & 15:30

Kaohsiung Experimental Theatre,
Penglai Warehouse B9, Pier-2 Art Center

Organizers

高雄市政府文化局
Bureau of Culture, Arts & Heritage, City Government

財團法人高雄市愛樂文化藝術基金會
Kaohsiung Philharmonic Cultural & Arts Foundation

Sponsor

黃金盾
HYGIENECARE

Tickets

UB 聯邦銀行

NT\$ 549

10% off when purchased with a
Union Bank of Taiwan credit card

Tickets via

OPENTIX
開票 藝文化生活

Link to tickets



Upcoming Performances

Southern Taiwan Arts and Dance Troupe **The Children Raised in the Mountains**

- 🕒 4.4 Sat., 4.5 Sun. 16:30
- 📍 Cishan Living Cultural Park

Blooming Grass Cooperative **Back to Hongmaogang**

- 🕒 4.4 Sat., 4.5 Sun. 16:30
- 📍 Hongmaogang Cultural Park

Hsi Dance Company **A Landscape of Neiwei**

- 🕒 4.11 Sat., 4.12 Sun. 16:00
- 📍 Neiwei Misty Forest
(Waterfront Waterway)

Solar Site Dance Theatre **A Dialogue Between Body and Space**

- 🕒 4.11 Sat., 4.12 Sun. 17:00
- 📍 Neiwei Arts Center

ShineZone Theatre **Ledger of Flowing Time**

- 🕒 4.18 Sat., 4.19 Sun. 16:00
- 📍 Former Sanhe Bank,
now Hamasen1921 Café

The 2026 KSAF Environmental Dance Series invites audiences to step into landscapes of mountains, sea, and memories of the past. Five outstanding Kaohsiung-based groups will take part, with children's environmental dance featured for the first time, depicting a child's deep affection for the mountain forests. From childhood memories at the foot of the mountains to the layered history along the shores of Hongmaogang; from the breath in the Mitsy Forest to the geometric dialogues with modern architecture—dancers will use their bodies as paintbrushes, writing moving chapters of this city's story in every corner of Kaohsiung.




Free Admission

幽怨牡丹

The Peony Lotus Lantern

A peony lotus lantern reveals love and desire—
true love, illusion, obsession, and the abyss.
Do you love me... or her?

2026/04/18 SAT. — 19 SUN. 14:30
Kaohsiung Experimental Theatre,
Penglai Warehouse B9, Pier-2 Art Center

Tickets: NT\$ 600, 1000 Tickets via  OPENTIX



Link to tickets

Organizer

高雄市政府文化局
Kaohsiung City Government Cultural Bureau

Performance unit

薪傳戲仔戲劇團
Xin Chuan Xian Zi Drama Troupe

Main Sponsor

STITE

台積電之社基金會
TSMC Foundation

廣告



Partnership



WEI WUYING
衛武營國際藝術文化中心
National Kaohsiung University of Arts
NKAU Pier-2 Art Center

衛武營國際音樂節

Weiwuying
International Music Festival

2026

4.19 Sun. 14:30 Weiwuying Concert Hall

閉幕音樂會 最後四首歌

Closing Concert *Four Last Songs*

Richard Georg Strauss
Masterpieces Across a Lifetime

Soprano: Hanna-Elisabeth MÜLLER Conductor: Chien Wen-Pin Kaohsiung Symphony Orchestra

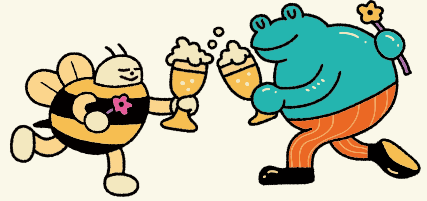


2026 Cheers Pier-2 Party: Honey Secrets 4.25 Sat. - 4.26 Sun. 14:00-21:00

Dayi Park

Spring Brewing · Autumn Toasting

A landmark event since 2018, the Cheers Pier-2 Party is dedicated to promoting local craft beer brands. This year, the special event “2026 Cheers Pier-2 Party: Honey Secrets” kicks off early for the start of summer! In collaboration with the Office of Marine Science and Technology at the National Kaohsiung University of Science and Technology and local craft brewery Liber Brewing, we are proud to host the “2026 Taiwan Beer Cup: Spring Homebrew Competition.” We invite craft brewing enthusiasts from across Taiwan to gather and exchange their unique flavors and creative inspirations.



Brewed with Honey: Crafting the First Flavors of Spring

A specialized “Honey Beer Category” has been established this year, inviting diverse brewing techniques that incorporate the designated ingredient: “WEN & CHENG Honey,” a heritage Kaohsiung brand from Dagang Mountain. The champion will co-create a collaboration brew with the 2026 Cheers Pier-2 Party, to be officially unveiled at the main event in October!



The Party Prelude

At the “2026 Cheers Pier-2 Party: Honey Secrets,” craft beer and culinary brands have crafted honey-themed creations. Floral nectar aromas will bloom across a diverse range of dishes and drinks, setting the stage for the grand Cheers Pier-2 Party in October!



Big Surprise!

4.3 Fri - 4.6 Mon. 10:00-17:00

Hamasen Railway Cultural Park, Warehouse B10

Pier-2 Presents: A Grand Children’s Day Event—Embark on an Adventure to Exclamation Island!

Exclusively for Children’s Day from April 3 to April 6, a mysterious “Exclamation Island” that only children can see will appear in the Penglai Area! At the heart of the island sits the “Imagination Base,” home to the Wonder Robot, who is powered by children’s imaginations. However, as children grow up and the world slowly loses its sense of wonder and curiosity, the Imagination Base is running low on energy, and the Wonder Robot is about to fall into a deep sleep...

Can you help recharge the Wonder Robot and wake it up?

COMIC BENTO

2.14-6.7

Dayi Warehouse C7: A.C.G.N. Warehouse

K.O. Fighting Festival — KOF '97 × Taiwan
Original Characters Collaboration Space

COMIC BENTO offers a brand-new experience that combines reading, shopping, and immersive activities. Featuring themed sections such as a takeaway counter, buffet, and cooking station, visitors can mix and match comics, animation, and graphic illustration merchandise.



The event features the exclusive, limited-time project “K.O. Fighting Festival,” a collaboration with the SNK classic The King of Fighters '97. By integrating multiple original Taiwanese IP characters, the project extends the worlds of video games and anime into the real world, creating a cross-generational, immersive, and interactive experience through pixel art aesthetics!

A lineup of original Taiwanese IP characters will also appear in pixel art style. The blue behemoth, Bugcat Capoo, presides over the final arena—which team’s charm will be enough to defeat this most adorable antagonist? When classic fighting games meet original Taiwanese IPs, the ultimate spark is about to ignite.

Hamasen Railway Cultural Park

Hamasen Railway Cultural Park is a popular destination on weekends and holidays, where visitors can enjoy sightseeing, relaxing, and taking photos. One of the park’s highlights is its collection of vintage trains, sourced from across Taiwan and meticulously restored. More than 30 retired trains, once used for transporting passengers and goods or serving specific industrial purposes, are showcased in the park, recreating the bustling railway operations that once characterized the Hamasen Railway.



Coastline Sightseeing Train “Hamasen Express / SL Hamasen Express”

One of the park’s most popular experiences is riding the coastline sightseeing train, the “Hamasen Express / SL Hamasen Express,” which bridges the past and present of Hamasen. Operating on Saturdays, Sundays, and national holidays, the train passes by sites like the Old Takao Station Platform, the park’s pedestrian bridge, the North Signal Tower, and the Kaohsiung Harbor Inspection Subsection, taking passengers on a journey through the century-long history of the Hamasen Railway. Whether you are a railway enthusiast or a visitor to Kaohsiung, we invite you to come and relive the excitement of trains running through Hamasen once again!

Brand-In-Residence



Horli Baking

Location: Train maintenance shed (Next to the “1990 Takao Station,” Hamasen Railway Cultural Park)

Opening Hours: Mon., Wed.-Sun.10:30-18:30; Closed on Tue.

Savor the final notes of the strawberry season with these tangy-sweet delights! Our Horli strawberry winter limited,

“Winter Love Strawberry Pull-Apart Bread,” features homemade natural strawberry jam swirled with rich cream cheese for a perfectly matched duo of flavors. We’ve also launched our Strawberry Danish. With every bite of its golden, crispy layers, it’s a treat you’ll want to enjoy again and again!



228 Sites Exhibition

2.24-5.3 📍 3rd Floor Corridor

Curated by the Memorial Foundation of 228, this exhibition shifts its focus to the land of Taiwan itself. Through paired images, texts, and carefully compiled historical records, it seeks to reconstruct how these sites appeared in 1947 and to reveal the ways they continue to exist within contemporary life. We hope that after visiting the exhibition, viewers will be inspired to seek out these traces of history scattered across the island—sites that bear the marks of the past—and help carry this memory forward.

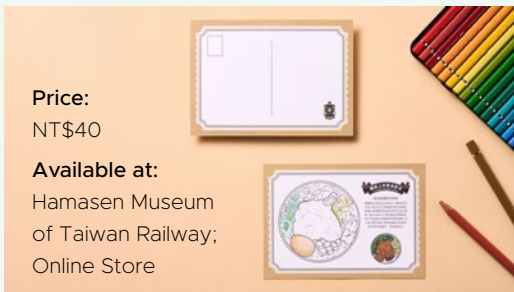


Hamasen Museum of Taiwan Railway

📍 Penglai Warehouses B7 & B8, The Pier-2 Art Center
(No. 99, Penglai Rd., Gushan Dist., Kaohsiung City)

☎️ 07-521-8900 🕒 Mon. to Sun., 10:00-18:00 (Closed on Tue.)

The special exhibition “All Aboard the Gourmet Express” explores the evolution of railway dining cars and railway bento culture, highlighting the close connection between transportation development and culinary traditions. A special exhibition postcard is also available, transforming the iconic pork-chop bento, an enduring symbol of Taiwan’s railway memories, into a playful keepsake at your fingertips. Whether kept as a souvenir of the exhibition or mailed to friends far away to share this warm memory, it makes a charming collectible.



The Hamasen Pier-2 Line Train is located in the Penglai Warehouse Cluster at The Pier-2 Art Center. The trains come in a variety of designs, including the Kaohsiung Light Rail, Taroko Express, and the Mikan Train, with different models running at random each day. Each ride circles the Penglai Warehouses and takes about 6–8 minutes, offering visitors a delightful journey filled with the distinctive charm of Taiwan’s railway culture. Tickets are available for purchase.

The Center of Old Fongshan City History (COFCH)

📍 No. 157-2, Guishan Ln., Zuoying Dist., Kaohsiung City ☎️ 07-5888398

🕒 Tue. to Fri.: 11:00 to 17:00; Sat., Sun. and national holidays: 10:00 to 18:00; Closed on Mon.

In Kaohsiung, Zuoying is home to the Old City of Fongshan, while Fongshan District is home to Fongshan County New City. What happened over the course of history that led to the construction of these two cities? Visit the Center of Old Fongshan City History to find out. Through illuminated scale models and interactive digital exhibits, the museum brings history to life and invites visitors to travel back in time to discover the story of Fongshan.



Double Classics

Moonlight Express & Love Letter — How are you, now?

Text by **Sean Lee** (writer)

“How are you?” Many years have passed, and he has long since departed. How else could they greet each other? This April, Double Classics is showing *Love Letter (4K Restoration)*, the definitive masterpiece of youthful longing by Shunji Iwai, and *Moonlight Express*, Takako Tokiwa's first collaboration with Leslie Cheung in Hong Kong. Both films spark a conflict by featuring the same actors playing different characters for various reasons. The conflict is born of regret, and that regret is traced back through memory. Those left behind search for substitutes, as if allowing a single soul to inhabit two bodies. Bound by a destiny born of loss, the boundaries of love and memory blur across the same “cinematic face,” as they softly offer each other the same words: “I am fine.”

Moonlight Express

🎬 Daniel LEE Yan-Kong

After a traffic accident takes the life of her fiancé, Tetsuya, Hitomi leaves her heartbreak behind in Japan and travels to Hong Kong. There, by pure chance, she encounters Kar-Bo, a man with the exact same face as her late fiancé. Kar-Bo, an undercover police officer, finds himself in a crisis during an operation, only to be saved by Hitomi's timely help. Starring Leslie Cheung and Takako Tokiwa, this story weaves a brilliant yet sorrowful fairy tale of shared discovery and romance amidst the romantic glow of the moon and stars.



Love Letter (4K Restoration)

🎬 IWAI Shunji

In Kobe, on the anniversary of her fiancé Itsuki Fujii's death in a mountain climbing accident, Hiroko Watanabe unexpectedly finds Itsuki's middle school yearbook. Following an old address from his days in Hokkaido, Hiroko sends a letter to express how deeply she still misses him. To her surprise, the letter ends up with a woman who shares the exact same name.



4.3 Fri. 19:30 • 4.4 Sat. 19:30 Jihshan Hall

Strong Strong’s Snarky Comedy Show 7: “Excuse Me, What Do You Mean?”

- ▶ Organizer: Live Comedy Club Taipei
- ▶ Performance units: Live Comedy Club Taipei/Strong Strong Studio
- ▶ Tickets: NT\$500, 1000, 1499, 1999, 2499
(Please refer to the KKTIX Ticketing System)
- ▶ Tel : 02-25000900

Strong Strong is the untamed emperor of Taiwan’s stand-up scene and a definitive master of audience interaction. With 20 years of theater experience and over 15 years on the comedy stage, he has earned a nickname from fans: “He thrills you with just his words, forces you to call the police with a single gesture, and drives the crowd into a frenzy with the gentlest kind of wickedness.”

Notice: Please be advised that this performance will be filmed. As the cameras may occasionally capture the audience, the purchase of a ticket and entry to the venue shall be deemed as consent to be photographed and filmed.



4.4 Sat. 14:30 Jihnde Hall

Zoorasian Brass 2026 Spring Tour

- ▶ Organizer: EJ Arts
- ▶ Performance unit: Zoorasian Brass
- ▶ Tickets: NT\$650, 950, 1250, 1550, 1850
(Please refer to the OPENTIX Ticketing System)
- ▶ Tel: 02-87738532

From Japan comes the wildly popular parent-child music program “Zoorasian Brass,” which performs over 100 sold-out shows annually in Japan to rave reviews. Its Taiwan tour has moved over 100,000 audiences, making it an absolute must-see annual event in the family entertainment scene!



4.6 Mon. 14:30, 19:30 Jihnde Hall

Theater Company HIKOSEN: New Snow White and the Seven Dwarfs

- ▶ Organizer: Warawa Arts Co., Ltd.
- ▶ Performance unit: Theater Company HIKOSEN
- ▶ Tickets: NT\$400, 600, 800, 1000, 1200, 1500
(Please refer to the ERA Ticketing System)
- ▶ Tel: 02-27785596

Snow White is no longer just a character waiting to be saved. This time, she ventures into the forest and lives alongside seven dwarfs overlooked by the world. Children will see through their story that fear, kindness, and courage can exist all at once. So now, choose a story for your children that’s truly worth experiencing in the theater!



4.10 Fri. 20:00 • 4.11 Sat. 14:30, 19:30 Jihnde Hall

D.C. Night Live Season 10, Episode 1 — I'll Go Crazy Right Now

- ▶ Organizer: Showtime Fool Comedy Company
- ▶ Performance unit: Dacon.come, Harry Tsao
- ▶ Tickets: NT\$600, 800, 1000
(Please refer to the OPENTIX Ticketing System)

A wildly popular live comedy show that has sold out year after year, and the laughter doesn't stop until your cheeks hurt. Blending manzai, free talk, musical comedy, and improvised audience interaction, the experience goes far beyond what you see in online videos. You'll only truly understand it when you experience it live. March 27–May 3, Taipei, Kaohsiung, Hsinchu, Taichung—the happy train is touring all over Taiwan! Come laugh with us live!



4.11 Sat. 19:30 Jihshan Hall

Selected Musical Works by Taiwanese Composers

- ▶ Organizer and Performance unit: Lu Percussion Group
- ▶ Tickets: NT\$600, 800, 1000
(Please refer to the OPENTIX Ticketing System)
- ▶ Tel: 0938-207863

This concert showcases the creative vitality of contemporary Taiwanese composition through percussion music. In Ying Kwang-I's *The Impermanence of Life*, resonant bells and gradually intensifying rhythms confront the suddenness of catastrophe. Chung Yiu-Kwong's *NUOWU II* unleashes the primal energy of ritual. Guo Shu-Yin's *Let's Dance* portrays life's turning points through displaced and shifting rhythms. *Aria* distills deep emotion through a dialogue between soloist and ensemble, while *Time of Celebration* brings the program to a vibrant close with bright, festive rhythms.



4.12 Sun. 14:30 Jihshan Hall

Joyful Faces ~ Kaohsiung Guitar Chamber Orchestra

- ▶ Organizer: Chuang Chia-Liang Guitar Ensemble
- ▶ Performance unit: Kaohsiung Guitar Chamber Orchestra
- ▶ Tickets: NT\$300, 400, 600
(Please refer to the ERA Ticketing System)
- ▶ Tel: 0931-812572

The concert program features a campus folk song suite beginning with *Joyful Faces*, a Gershwin suite presented in a classic jazz style and concludes with the lively *Light Cavalry Overture* as the grand finale. All ensemble arrangements for this performance were specially adapted by ensemble member Wang Chao-Hung, giving the concert a distinctive and unique musical character.



4.14 Tue. 19:30 • 4.15 Wed. 19:30 (Jihde Hall)

April 2026 Soka Performing Arts “A Night of Splendor: Classic Highlights – Toru Arima Noche Cubana × Linda Yamamoto”

- ▶ Organizer: Soka Cultural and Educational Foundation
- ▶ Performance units: Noche Cubana, Linda Yamamoto
- ▶ Tickets: NT\$900, 1200, 1500, 1800, 2000
(For tickets, please contact soka.fdn.tk@gmail.com.)
- ▶ Tel: 02-28881777

Toru Arima & Noche Cubana, Japan's top Latin big band, combine passionate rhythms with dazzling brass to create a truly spectacular stage experience. Their past performances have received rave reviews. This time, they join forces with Linda Yamamoto to perform timeless classics, leading the audience into a vibrant, exhilarating musical world with their masterful playing.



4.16 Thu. 19:30 (Jihshan Hall)

The Deep Resonance & The Ultimate Challenge Kuo Yu-Syuan Tuba Solo Recital

- ▶ Organizer: Taiwan Philharmonic
- ▶ Performance units: Advisor/ Prof. Tang Chih-Wei, Tuba Soloist/ Kuo Yu-Syuan, Guest Conductor/ Wu Hung-Kai, Accompaniment: Wind Band
- ▶ Tickets: NT\$300 (Please refer to the OPENTIX Ticketing System)

When the “Silent Giant” takes center stage, the tuba will sing with the agility and expressiveness of a cello! Featuring Kuo Yu-Syuan, Principal Tuba of KSYSO, this performance tackles a stunning full wind ensemble concerto. From Bach's timeless classics to epic masterpieces, witness the next generation of top-tier talent redefine the tuba's rich, resonant power.



2026 Wind Sound Ensemble “Infinite Concert”

- ▶ Location: Jihde Hall
- ▶ Organizer and Performance unit: Wind Sound Ensemble
- ▶ Tickets: NT\$800, 1200, 1600, 1800, 2000, 2200 (Please refer to the OPENTIX Ticketing System)
- ▶ Tel: 0916-128871

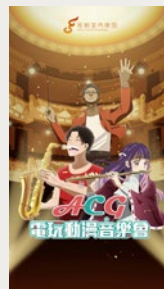
4.18 Sat. 13:30 The Music of Hayao Miyazaki

In recent years, Wind Sound Ensemble has been the only group in Taiwan consistently invited to create special live performances for Hayao Miyazaki's animated film re-screenings, earning widespread acclaim. Next, the ensemble will once again collaborate with top musicians across Taiwan to bring to life the most moving music from the animated world of Hayao Miyazaki!



4.18 Sat. 18:30 ACG Video Game & Anime Music Concert

In *Infinite Concert*: ACG, Wind Sound Ensemble presents a selection of music from classic anime, manga, and video games. From intense, action-packed battle themes to deeply moving emotional melodies, each piece represents a unique musical world.



4.19 Sun. 14:30 Jihde Hall

MSWO 11th Season Concert “A Call from Antiquity”

- ▶ Organizer: Kaohsiung Citizens Band
- ▶ Performance unit: Mystery Symphony Wind Orchestra
- ▶ Tickets: NT\$300, 500, 800, 1200, 2000
(Please refer to the OPENTIX Ticketing System)
- ▶ Tel: 0929-553366

This concert is presented in collaboration with the Mystery Symphony Wind Orchestra, conducted by Kao Tsung-Wen. The program will also feature Liu Yu-Nan, Principal Trombonist of the Evergreen Symphony Orchestra, performing Launy Grøndahl's *Concerto for Trombone and Band*, composed in 1924, with the ensemble.



4.21 Tue. 19:00 Jihshan Hall

Chen Yu-Cheng Conducting Recital “Soul”

- ▶ Organizer and Performance unit: Kaohsiung Citizens Band
- ▶ Tickets: NT\$300, 500
(Please refer to the ERA Ticketing System)
- ▶ Tel: 0929-553366

This concert presents the conductor's integrated approach to musical structure, sonic expression, and stage interpretation. Through Igor Stravinsky's *L'Histoire du Soldat Suite*, Edward Elgar's *Serenade for String Orchestra in E Minor*, and Emmanuel Séjourné's *Concerto for Marimba and Strings*, the program outlines the conductor's core artistic pursuits in practice—rhythmic precision, expressive musical interpretation, and a spirit of collaboration.



4.24 Fri. 19:30 Jihde Hall

An Evening of Edo-Period Japanese Traditional Arts and Culture

- ▶ Organizer: Kaohsiung Philharmonic Cultural & Arts Foundation
- ▶ Performance unit: Sankyokai
- ▶ Tickets: NT\$500, 900, 1200, 1800, 2200, 2600, 3000
(Please refer to the OPENTIX Ticketing System)
- ▶ Tel: 07-7436633

The program features one of Japan's most distinguished traditional music lineages—Sankyokai, an ensemble formed by three brothers. The program is curated, directed, and performed specifically for KSAF by Tanaka Denjiro, a bearer of an Important Intangible Cultural Property. Through his artistic vision, audiences are guided into the spiritual core of Japanese traditional performing arts, offering a rare glimpse into a cultural legacy that has been passed down through generations.

