

文化
高雄

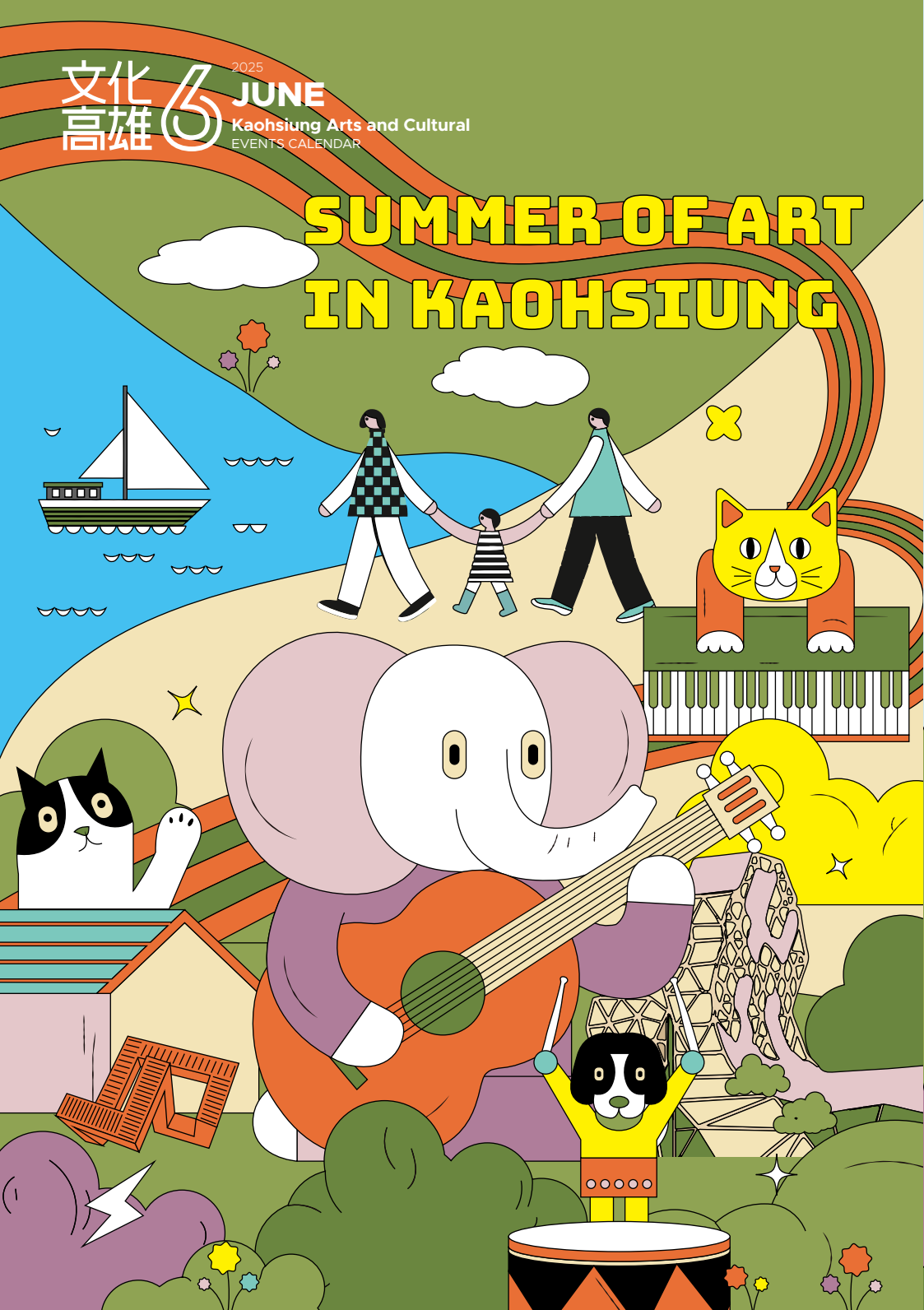


2025

JUNE

Kaohsiung Arts and Cultural
EVENTS CALENDAR

SUMMER OF ART IN KAOHSIUNG



Summer of Art in Kaohsiung

Walk with Inspiration, Play with Creativity

Kaohsiung—dynamic, lively, and full of cultural charm—has long been one of Taiwan’s favorite travel destinations. After a busy first half of the year filled with work and studies, it’s time to take a breath and relax. Therefore, at the beginning of the second half of the year, the arts and cultural venues of Kaohsiung are here to bring you a fun and relaxing summer vacation. A variety of student-and-family-friendly events are kicking off in June, inviting students and parents to join us at the arts and cultural venues. This summer, immerse yourself in the artistic atmosphere, recharge your spirit, and get ready for the challenges in the second half of the year!

Showcasing creativity and preserving cultural history, the arts and cultural venues of Kaohsiung have become top cultural destinations in Southern Taiwan in recent years. From June to August, during summer vacation, we present a series of arts activities to give children of all ages a colorful summer. The Pier-2 Art Center, Kaohsiung Music Center, Kaohsiung Museum of Fine Arts, Children’s Museum of Art, Kaohsiung Public Library, Kaohsiung Film Archive, Neiwei Arts Center, Kaohsiung Museum of Shadow Puppet, Former Patriotic Women’s Association Hall, Taiwan Pineapple Museum, Fongyi Academy, Hongmaogang Cultural Park, Fengpitou Archaeology Education Center, and National Kaohsiung Center for the Arts (Weiwuying), will each launch its arts and cultural events such as summer camps, DIY activities, history walking tours, parent-child rhythm activities, parent-child workshops, picture book storytelling, and drama experiences for children and parents to enjoy together. A variety of fulfilling events that are both artistic and fun will help foster a sense of beauty in daily life, build a solid foundation for artistic creation, and cultivate art appreciation in children. In addition, interactive parent-child activities will strengthen the bond between parents and children and bring the family closer together.

This summer, we welcome everyone to visit Kaohsiung hand in hand. Let Kaohsiung’s creative energy and cultural charm accompany you on a fun, enlightening, art-filled holiday!



KCO 高雄市國樂團
KAHSIUNG CHINESE ORCHESTRA

Conductor
Kuo Che-Chen

K
S
A
F
2025

Setlist

- Full of Spring Breeze
- Waiting for the Spring Wind
- Shima Uta
- She is Our Darling + Nadasousou
- Soshu Yakyoku
- Warabigami Yamatoguchi + The Apple of My Eye
- Dreams of Blue
- The Torment of a Flower + The Moon Represents My Heart
- Rainbow + Asadoya Yunta + Tung Blossom

淚 之 女 神

Natsukawa Rimi
with KCO



Sanshin
Kenyu So



2025 **6.15** SUN. 19:30
Weiwuying
Concert Hall

Tickets via  **OPENTIX**
兩廳院文化生活

Tickets: NT\$400, 600, 800, 1000, 1200, 1500, 2000
10% off when purchased using the Union Bank of Taiwan credit card

Organizers  財團法人高雄市愛樂文化藝術基金會
Bureau of Cultural Affairs Kaohsiung City Government Kaohsiung Philharmonic Cultural & Arts Foundation

Link for tickets



弄臣

Verdi's Opera
Italian Pronunciation, Chinese Subtitles

In this gamble-like
wheel of fortune—
who will be the final winner?

6/20·22 Fri. 19:30 Sun. 14:30 Weiwuying Opera House

RIGOLETTO

Performers | Conductor | Wu Yao-Yu | Director | Gianni Santucci



Alfredo Daza | Lai Chueh-Yu | Garrie Davislim | Julian Lo | Weng Jo-Pei | Cheng Hai-Yun | Chao Fang-Hao | Chang Yin-Chi | Chen Chi-An | Wang Yu-Hsin

Planetesimal Vocal Art Studio



Tickets OPENTIX
via 南 廊 院 文 化 生 活

Tickets: NT\$ 600 / 1000 / 1400 / 1800 / 2200 / 2600 / 3000 / 3400 / 3800
10% off when purchased using the Union Bank of Taiwan credit card

The paradoxical melody,
finding the strength of coexistence between push and pull.

推 and PULL 拉

Choreographing a Dance for Your Exhaustion:

In relationships, workplaces, and families, countless moments of pushing and pulling reveal the intersection between resistance and dependence.

The choreographer, Lai Hung-Chung, collaborates with dancers Li Kuan-Lin and Lu Ying-Chieh to present their globally acclaimed duet performance *Push and Pull*, which was ranked among the top 16 in a world-class choreography competition.

Blending the balance of Tai Chi philosophy with physical principles, they draw inspiration from the everyday dynamics of "push" and "pull," transforming them into a poetic visual experience on stage.

Each tension and distance within the performers' bodies narrate a profound philosophy of life.

2025 **JUNE 07th** 14:30 / 19:30 **08th** 14:30

Kaohsiung Experimental Theatre,
Penglai Warehouse B9,
Pier-2 Art Center

Organizers

高雄市政府文化局
Bureau of Cultural Affairs Kaohsiung City Government

高雄春天藝術節

翹舞

Sponsor

財團法人
青綠文化藝術基金會

Please refer to the
OPENTIX Ticketing System



★ EVERYONE IS UNIQUE. ★

This time, the Little Prince isn't journeying across different planets; instead, people from various planets have come to find him at the Kaohsiung Experimental Theatre! ★

A pilot who survived a plane crash picks up his pen to write a novel about his experiences in aviation and life. Through the innocence of the Little Prince, he attempts to express that "the world of adults is bizarre."

A director, who is both a father and has experienced the loss of his father, revisits the symbolic characters in *The Little Prince*. In the adult world—brave yet timid—he wishes to embark on another journey with the Little Prince.

★ Next stop, where shall we go?

Double & Cross Theater Group

Chen Ying-Da

小王子

sió-ông-tsu

6.13 Fri. 19:30 14 Sat. 14:30、19:30

Kaohsiung Experimental Theatre,
Penglai Warehouse B9, Pier-2 Art Center

NT\$ 450

Performance Duration: 70 minutes
Recommended Age: 7 and above

Link for tickets



National Kaohsiung
CENTER for ARTS
WEI WUYING
衛武營 國家藝術文化中心
國家表演藝術中心 National Performing Arts Center

心我劇團
Yi-Shin Taiwanese Opera Troupe

KSAF
2025



A Maze of Mirth and Mirage



STARRING

Sun Shi-Pei
Sun Shi-Yong
Zheng Zi-Yun
Ke Jin-Long

WITH A SPECIAL

Appearance by
“Martial Arts Champion”
Sun Rong-Hui

Adapted from Corneille’s 17th-century French classical masterpiece, the 2024 Taishin Arts Award-nominated *A Maze of Mirth and Mirage* revolves around parent-child communication while skillfully blending elements of traditional Taiwanese opera and European classics.

A Maze of Mirth and Mirage tells the story of a controlling father whose son runs away from home. With the help of a powerful celestial master, the father witnesses his son’s peculiar experiences through a series of illusions. Featuring “a play within a play” where reality and drama intertwine, the production takes the audience on a journey of joy, grief, wit, bravery, and a thrilling near-death moment. With a plotline as twisting as a maze, the audience is drawn into a world where the line between reality and illusion blurs.

6.7 Sat.
14:30

6.8 Sun.
14:30

Weiwuying
Playhouse

25% Off for Groups of Four
50% Off for Individuals Over 65 (per ticket)



ALTER

The
Dream
No.30

戲神 養成記

畢拾熒
夢



The 30th Anniversary Special Production

A master production team presents a fantastical world of Taiwanese opera. Featuring a borderless concept that blurs the lines between humans and gods, incorporates various music genres, and blends ancient and modern costumes, The Dream No.30 will take you on a journey of humor and heart.

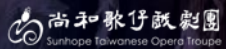
2025

6 / 28 Sat. — 29 Sun.
14:30 14:30

Dadong Arts Center



Organizers



Performance unit



Supervisors and Sponsors



A Hundred Visions Beyond 10 Perspectives International Exhibition of Next-Gen Designers

5.1-9.7

Dayong Warehouse C5

This exhibition features ten top design experts who selected forward-thinking and innovative works from recent award-winning designers in local and international competitions. The goal is to discover the value of future design through dialogue, combining professional designers' broad vision with new designers' groundbreaking creativity.



Among them, Professor Chi-Mei Chang, a specialist in visual communication design, recommended award-winning works from prominent emerging designer competitions in Japan over the past three years, including the GOOD DESIGN NEW HOPE AWARD and the JAGDA International Student Poster Award. These selected works are characterized by a clearly defined conceptual theme, diverse material choices, and distinctive visual expression. In particular, the posters stand out for their strong visual impact and unconventional imagery, often breaking traditional perspectives or conveying subtle metaphors that provoke deeper reflection. Meanwhile, the socially driven pieces evoke a strong sense of empathy and inspire a desire to act. Both categories of works successfully engage viewers, sparking thought and emotional resonance.

Someone's Still Here: Chien Man-Chun Solo Exhibition

6.3-6.29

Dayi Warehouse C8-1: Young Art Space

Artist: Chien Man-Chun

Chien's family home lies within the area designated for demolition as part of the Taoyuan Aerotropolis project. As relocation approached, she began documenting the village on the verge of disappearance. One day, she saw a message scrawled on the wall: "Someone's living here, don't steal." It made her realize that her act of recording might also be a kind of "stealing." The line between public and private blurred, and memories lingered like shadows, always present, as if never truly gone, because someone is still here.



AI Animated Art Special Exhibition – Kaohsiung 6.20-9.7

Dayong Warehouse P3

Step into a fantastical world beyond the picture frame. This hands-on, interactive, and ultra-photogenic art party will completely transform your expectations of an art museum. Nearly 20 AI-generated interactive artworks combine sensor technology, projection mapping, and sound design. The paintings come to life, speak, and even respond to you. Every step is filled with surprises and delight. Visitors of all ages are welcome to join the experience with curiosity and imagination.



Hamasen Railway Cultural Park

Hamasen Railway Cultural Park is a popular destination on weekends and holidays, where visitors can enjoy sightseeing, relaxing, and taking photos. One of the park's highlights is its collection of vintage trains, sourced from across Taiwan and meticulously restored. More than 30 retired trains, once used for transporting passengers and goods or serving specific industrial purposes, are showcased in the park, recreating the bustling railway operations that once characterized the Hamasen Railway.



Coastline Sightseeing Train “Hamasen Express”

One of the park's most popular experiences is riding the coastline sightseeing train, the “Hamasen Express,” which bridges the past and present of Hamasen. Operating on Saturdays, Sundays, and national holidays, the train passes by sites like the Old Takao Station Platform, the park's pedestrian bridge, the North Signal Tower, and the Kaohsiung Harbor Inspection Subsection, taking passengers on a journey through the century-long history of the Hamasen Railway. Whether you are a railway enthusiast or a visitor to Kaohsiung, we invite you to come and relive the excitement of trains running through Hamasen once again!



Exclusive Souvenirs

Mini Train Balloon

The adorable balloon modeled after the DL-1043 shunting locomotive makes for a fun and lightweight keepsake to bring home.



Metal Train Pins

Crafted using a faux-enamel technique, these five classic train models are beautifully represented in pin form, evoking fond childhood memories of train travel.



Train Illustration T-Shirts

Featuring detailed train illustrations by artist Croter, these eye-catching T-shirts come in three unique designs and make perfect collectibles for railway fans.



Bamboo Folding Fan

This traditional bamboo-handled fan combines craftsmanship with retro railway aesthetics, offering a charming and photogenic way to stay cool.



Resident Vendor

SNOW Gelato

Location:
Next to LRT Hamasen Station

No summer is complete without mangoes. SNOW is serving up a seasonal favorite, the Italian Mango Sorbet, made with the freshest Irwin mangoes of the season. Each bite is bursting with rich mango flavor and a smooth, refreshing texture that's perfect for cooling down. Come enjoy a scoop of SNOW's finest and beat the summer heat.



5.20-11.30

The Activist on the Buffalo: Jian Ji and the Centennial of the Fongshan Peasants Union

Location: 203 Multi-Functional Room

In the 1920s, Jian Ji and a group of young activists committed themselves to protecting Taiwan's rural communities and supporting poor tenant farmers, starting one of the earliest peasant movements in Taiwan. Driven by a strong sense of justice and unwavering spirit, Jian Ji led these youths through rural communities to promote a social movement. He earned deep respect from farmers but faced suppression and defamation by the authorities. This exhibition highlights the efforts of Jian Ji and his peers to fight for people's rights and how they built the foundation for Taiwan's free and democratic society.



Takao Railway Museum

No. 32, Gushan 1st Rd., Gushan Dist., Kaohsiung City 07-5216209 trm.tw
Tue. to Sun. and national holidays, 10:00-18:00 (Closed on Mon.)

How do train drivers control a train? At the Takao Railway Museum, visitors can explore the driver's cab of the R67, an R20 series diesel-electric locomotive, featuring its original control stand. This locomotive was introduced into service in 1966 and remained operational until its retirement in 2015. In 2018, to save this piece of railway history, parts of the control stand were moved to the museum. Now, people can see this historical artifact up close.



The Center of Old Fongshan City History (COFCH)

No. 157-2, Guishan Ln., Zuoying Dist., Kaohsiung City 07-5888398
Tue. to Fri.: 11:00 to 17:00; Sat., Sun. and national holidays: 10:00 to 18:00;
Closed on Mon.

Since ancient times, Zuoying has been known as "Turtle Mountain" and "Snake Mountain" because of two nearby mountains that resemble a turtle and a snake's tail. When the earthen city wall was first built, it was described as "nestled between Turtle Mountain and Snake Mountain" as the wall spanned both mountains. Later, the newly constructed stone wall surrounded Turtle Mountain while leaving out Snake Mountain, leading to the saying "enclosing the turtle and releasing the snake."



Want to hear more stories about Zuoying? Book a guided tour at the Center of Old Fongshan City History today!

Guided Tours at COFCH

- Group Size: Tours are available for groups of 5 or more.
- How to book: Call us at (07)588-8398 or message us on our Facebook page.
- Booking notice: Please make your reservation at least one week in advance.

Double Classics: David BOWIE

Text by **Chen Yi-Ting**

Of all David Bowie's appearances on the silver screen, the most iconic are undoubtedly the undefinable, one-of-a-kind "Bowie-esque" characters that capture his innate charm—those who walk the line between good and evil, as ambiguous as a fusion of salvation and nightmare. In "Double Classics: June 2025," Kaohsiung Film Archive is showing "Merry Christmas, Mr. Lawrence" and "Labyrinth," offering a glimpse into how David Bowie's charisma is magnified on screen, drawing all eyes to him.

Labyrinth

© Jim HENSON

While babysitting her little brother, a daydreaming girl wishes for the constantly crying baby to be taken away by the Goblin King. Unexpectedly, her wish is granted, and her brother is suddenly nowhere to be seen. Filled with regret, she must solve the labyrinth surrounding the Goblin King's castle within a limited time to save her brother. The multitalented David



Bowie delivers a stunning performance as the captivating villain who walks the line between good and evil, bringing to life the most flamboyant, and fashionable Goblin King of all time.

Merry Christmas, Mr. Lawrence

© Nagisa ŌSHIMA

In 1942, at a Japanese prisoner-of-war camp (POW camp) in Java, captured British soldier Lawrence serves as the interpreter between the Japanese soldiers and the prisoners. One day, the commander of the POW camp, Yonoi, brings in a prisoner named Jack. As Jack's wild, rebellious, and provocative attitude gradually heightens



the tension within the camp, a subtle romance quietly develops between Yonoi and Jack. Nagisa Ōshima brings together David Bowie, Takeshi Kitano, and the timeless music of Ryuichi Sakamoto, to tell the story of an unforgettable, tropical, blue Christmas.

6.7 Sat. 19:00 Jihnde Hall **Strings FUN Summer**

- Organizer: Chia Yin Chamber Orchestra
- Tickets: NT\$500 (Please refer to the ERA Ticketing System)

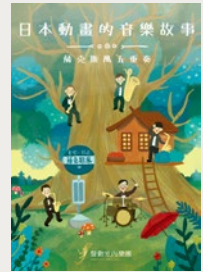
This concert brings together string orchestras from several schools: Dah Yung Cambridge International Bilingual School, Ling Zhou Elementary School, FUHWA Elementary School, Fusing Elementary School, and Fudong Elementary School, along with the Yi Qi Music Academy, composed of numerous passionate music lovers. They will perform a diverse and engaging repertoire. Everyone is welcome to attend and support these future stars of the string music world.



6.8 Sun. 14:30 Jihshan Hall **Feast of Sound: Hayao Miyazaki Animation Concert**

- Organizer and Performance unit: Anisonic Ensemble
- Tickets: NT\$600, 800, 1000, 1200 (Please refer to the OPENTIX Ticketing System)
- Tel: 0958-102333

From the innocent playfulness of *My Neighbor Totoro* to the fantastical poetry of *Spirited Away*, from the majestic grandeur of *Castle in the Sky* to the profound emotions of *Howl's Moving Castle*, each melody contains the soul that composer Joe Hisaishi poured into Hayao Miyazaki's animations, and they are cherished memories that have accompanied us as we grew up.



6.8 Sun. 19:30 Jihshan Hall **Prelude to Love: Selected Music from Korean Dramas**

- Organizer and Performance unit: Anisonic Ensemble
- Tickets: NT\$600, 800, 1000, 1200 (Please refer to the OPENTIX Ticketing System)
- Tel: 0958-102333

The Anisonic Ensemble has reinterpreted 20 years of classic Korean drama theme songs. They use the warm tones of the saxophone and the tender expressions of the piano to create beautiful melodies. These familiar tunes are now infused with fresh vitality, inviting drama enthusiasts to relive cherished moments through the power of music.



6.9 Mon. 19:30 Jihnde Hall **Reappearance of Glory**

- Organizer: Kaohsiung Municipal Yangming Junior High School
- Performance unit: Kaohsiung Municipal Yangming Junior High School Chinese Orchestra
- Tickets: NT\$100
- Tel: 07-3892919#79, 0928-165653

The Yangming Junior High School Chinese Orchestra was established in September 2002. Since its inception, the orchestra has consistently received High Distinction Awards in various national music competitions. The repertoire for this concert includes several well-known pieces: *Kavalan*, *Love on the Silk Road*, *Yue*, and *Rowing Jasmine: The Xiao Liu Melody*.



6.9 Mon. 19:30 (Jihshsan Hall)

Nonconformist Music 2.0

- ▶ Organizer: Kaohsiung Citizens Band
- ▶ Performance units: Kaohsiung Citizens Band, Tseng Po-Yu, Chen Ya-Shih
- ▶ Tickets: NT\$300 (Please refer to the ERA Ticketing System)
- ▶ Tel: 0929-553366

Curious about how a flute duo interprets the lyrical melodies of Bach, blending emotion and reason? Interested in how two flutes can engage in a musical dialogue that captures the essence of American musical styles? Flutists Tseng Po-Yu and Chen Ya-Shih will present a captivating flute duo chamber music performance, offering audiences an enchanting musical experience.



6.14 Sat. 19:30 (Jihshsan Hall)

Guan Gong and the Princess? What Kind of Fairy Tale Is That?!

- ▶ Organizer and Performance unit: Comedy Times
- ▶ Tickets: NT\$600, 800 (Please refer to the OPENTIX Ticketing System)
- ▶ Tel: 0921-790074

Comedy Times: Guan Gong and the Princess? What kind of fairy tale is that?! Did the princess sneak a bite of oden cooked by Guan Gong, leading him to lock up the princess? What a tongue twister! Guan Gong? Princess? Oden? Public relations? Gatekeeper? My lord? What kind of play is this? A jumbled historical tale? A parody of fairy tales? It's a brand-new blend of manzai, crazy skits, and improvisational comedy!



6.15 Sun. 14:30 (Jihshsan Hall)

Eternal Strings Series – A Carefree Concert of Strings

- ▶ Organizer: Kaohsiung Municipal Longhun Junior High School
- ▶ Performance unit: Kaohsiung Municipal Longhun Junior High School String Orchestra
- ▶ Tickets: NT\$300 (Please refer to the ERA Ticketing System)
- ▶ Tel: 0919-899221

The Longhua Junior High School String Orchestra, established in 2017, is dedicated to nurturing students' artistic sensibilities. This concert features a diverse repertoire, ranging from classical serenades to contemporary film scores, showcasing the students' multifaceted musical achievements. We warmly invite you to experience the captivating melodies where youth and music intertwine.



6.28 Sat. 14:30 (Jihnde Hall)

Zuoying Junior High School Music Performance Showcase: Rhythm of Youth

- ▶ Organizer: Kaohsiung Municipal Zuoying Junior High School
- ▶ Performance units: Kaohsiung Municipal Zuoying Junior High School Choir, Wind Orchestra, Ba-Gua Elementary School Wind Orchestra
- ▶ Tickets: NT\$200 (Please refer to the ERA Ticketing System)
- ▶ Tel: 07-3433080#1212

"Youth is a journey filled with rhythm and motion!" The choir and wind orchestra students from Zuoying Junior High School will present heartfelt singing and lively melodies, composing a touching chapter of youth. Come and enjoy this wonderful musical moment with us!



6.29 Sun. 14:30 Jhinde Hall

Galaxy Valley Musical Theatre Troupe: Puppet Musical Cinderella

- ▶ Organizer and Performance unit: Galaxy Valley Musical Theatre Troupe
- ▶ Tickets: NT\$400, 600, 800, 1000, 1200 (Please refer to the OPENTIX Ticketing System)
- ▶ Tel: 02-25592766



The castle is hosting a grand ball. A magical fairy godmother transforms a pumpkin into a carriage and turns Cinderella, who has long been bullied by her stepmother and stepsisters, into a beautiful princess. As the clock strikes midnight, Cinderella hurriedly flees the castle, leaving behind a glass slipper. The next day, a royal minister arrives at Cinderella's home with the glass slipper...

Dadong Arts Center

📍 No. 161, Guangyuan Rd., Fengshan Dist., Kaohsiung City
☎ 07-7430011 🌐 dadongcenter.kcg.gov.tw

6.4 Wed. 19:30

Ba-Gua Elementary School Wind Band 2025 Annual Concert

- ▶ Performance unit: Wind Band, Ba-Gua Elementary School, Kaohsiung City
- ▶ Tickets: NT\$100 (Please refer to the ERA Ticketing System)

The Ba-Gua Elementary School Wind Band has a proud history of over 20 years. Band members dedicate their early mornings and after-school hours to rehearsal, actively participating in performances both on and off campus. The group has also consistently achieved excellent results in annual music competitions. This year, the students are ready to transform their passion for music into melodies, and they warmly invite you to join them in this joyful celebration of sound.



6.6 Fri. 20:00 • 6.7 Sat. 14:30, 19:30
“**.come!**” Season 9, Episode 2

- ▶ Performance unit: Dacon-Manzai
- ▶ Tickets: NT\$600, 800, 1000 (Please refer to the OPENTIX Ticketing System)

Blending multiple comedic styles such as *manzai* (Japanese-style comedy), musical comedy, interactive improv, and spontaneous singing, this high-energy Japanese-inspired comedy show is packed with audience engagement and live spontaneity. Now entering its ninth season, “.come!” is bringing its laughter-filled tour across Taiwan. Get ready to laugh out loud and join the fun!



6.8 Sun. 14:00

Infinite Hopes: The Budding Sound of Strings

- ▶ Performance unit: New Hope Music Ensemble
- ▶ Tickets: NT\$150 (Please refer to the ERA Ticketing System)

This concert showcases the achievements of young musicians who have studied string instruments, flute, and jazz drums over the past two semesters. Students from multiple schools will join together in ensemble performances, offering a wonderful opportunity for them to present the fruits of their musical learning this academic year.

6.14 Sat. 14:30 Wild Ginger Boys Trio

- ▶ Performance unit: Between the Lines Chamber Ensemble
- ▶ Tickets: NT\$1000, 5000 (Please refer to the ERA Ticketing System)

Between the Lines Chamber Ensemble is formed by a group of passionate classical musicians dedicated to promoting exceptional works, nurturing music appreciation, and elevating the quality of local music. Over the years, the ensemble has actively organized professional concerts and various music events, striving to integrate local musical resources and foster a vibrant cultural environment.



6.20 Fri. 19:30 Sing with FUN– A Choral Celebration

- ▶ Performance unit: Kaohsiung Philharmonic Chamber Choir
- ▶ Tickets: NT\$300, 500 (Please refer to the OPENTIX Ticketing System)

Gather your friends and sing your heart out! In this joyful and liberating concert, the Kaohsiung Philharmonic Chamber Choir joins voices with the Singable Choir to present an uplifting evening of music. The program features selections from musicals, songs in Mandarin and Holo (Taiwanese), as well as timeless pop favorites.



6.21 Sat. 19:30 Radiant Taiwan: KCO Finland Pre-departure Concert

- ▶ Performance unit: Kaohsiung Chinese Orchestra
- ▶ Tickets: NT\$300, 500, 800, 1000, 1200 (Please refer to the OPENTIX Ticketing System)

Invited by Pro Events Mikkeli, the Kaohsiung Chinese Orchestra (KCO) will present four featured performances at Festival X Mikkeli in Finland. As the festival's sole representative of traditional ethnic music, KCO will also curate a special "Experience Taiwan" cultural program, showcasing the richness of Taiwanese heritage. Before embarking on this international journey, KCO invites you to join their pre-departure concert and witness the vibrant opening chapter of Taiwan's musical presence on the global stage.



6.22 Sun. 19:30 Fig Tree Choir: A Message of Love to Fengshan

- ▶ Performance unit: Fig Tree Choir ▶ Ticket for sale

Guided by the Christian spirit of universal love, the Fig Tree Choir brings together individuals who have overcome the influences of addiction and harmful social environments. Through uplifting spiritual songs, soft-style purification music, and heartfelt testimonies of transformation, this concert seeks to inspire, educate, and offer hope to all in attendance.

6.28 Sat. 14:30 • 6.29 Sun. 14:30 The Dream No.30

- ▶ Performance unit: SunHope Taiwanese Opera Troupe
- ▶ Tickets: NT\$500, 800, 1000, 1200, 1500, 1800, 2200, 2500, 3000 (Please refer to the OPENTIX Ticketing System)

In the final moments of his life, the aging master of a Taiwanese opera troupe raises his frail hand and points to Opera Chest No. 30. His three disciples rush forward to open it—only to be engulfed in a cloud of smoke. From the mist emerges... the Opera Deity.

