

文化
高雄

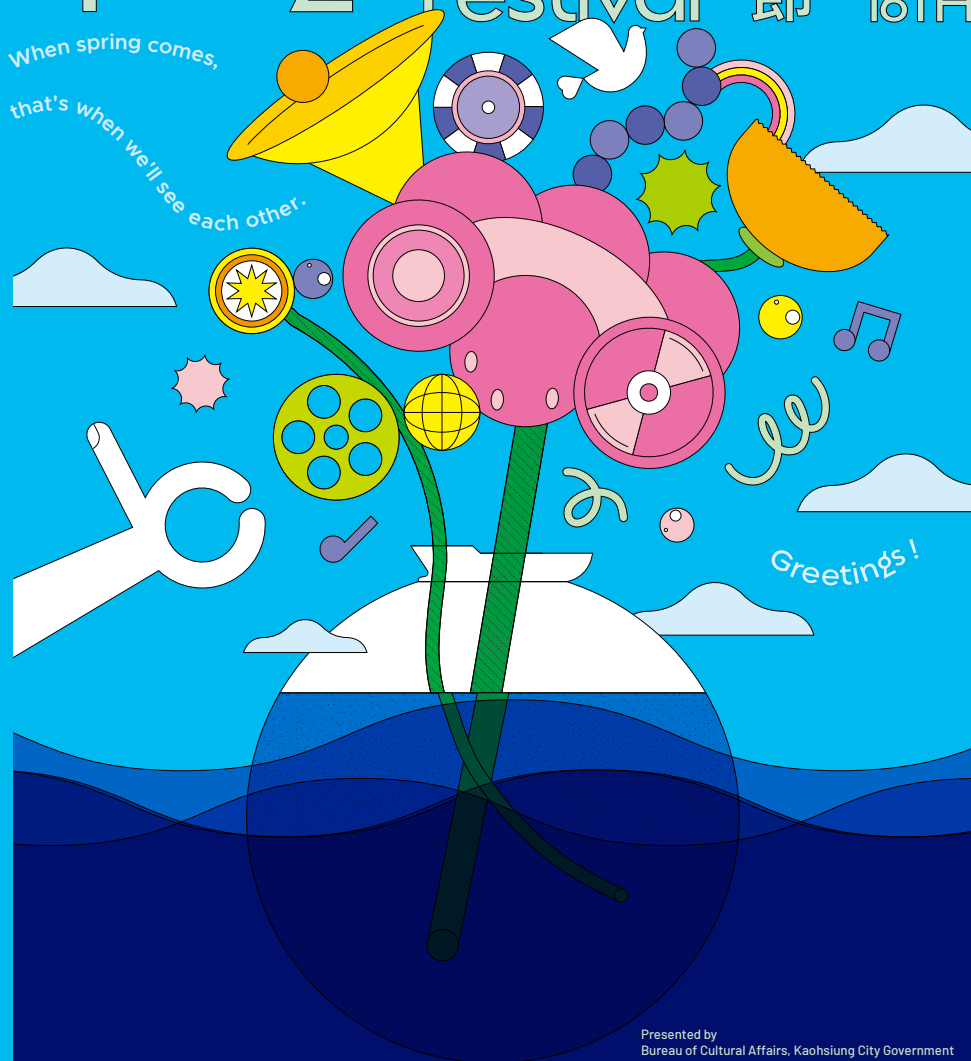
FEBRUARY

Kaohsiung
Arts and Cultural
EVENTS CALENDAR

Kaohsiung Spring Arts Festival 2025

高雄
春天
藝術
節
16TH

When spring comes,
that's when we'll see each other.



Greetings!

2025 2February—7July

Presented by
Bureau of Cultural Affairs, Kaohsiung City Government
Kaohsiung Philharmonic Cultural & Arts Foundation

高雄春天藝術節

Tickets via OPENTIX



Greetings! When spring arrives, it's time for us to meet.

As winter fades into spring, the annual Kaohsiung Spring Arts Festival (KSAF) returns. In its 16th edition, KSAF promises another year of captivating programs. The festival's visual identity is crafted by emerging designer Tung Yuan-ting, who brings her vibrant vision to life with the concept: "Planting spring with hands, blooming in art, and resonating with the ever-changing emotions of the harbor."

This is the biggest arts event in southern Taiwan since the beginning of spring. The most anticipated Grassland Concert will be the February 28 Memorial Grassland Concert, which will be held on February 28, the first day of the long weekend, to commemorate the memory and pray for love and peace. The Grassland Concert will feature the full version of the movie "Matilda" and the "K-drama OST Grassland Concert" for families to enjoy together. With live performances by the Kaohsiung Symphony Orchestra and Kaohsiung's unique open grassy slopes, the Grassland Concert is highly anticipated by many fans every year. It is worth mentioning that this year the organizer is breaking through the high cost of copyrighted audio and video and overcoming the challenge of licensing classic Korean drama images by inviting MOST CONTENTS, a Korean production company, to perform a series of classic Korean drama OST symphonies with classic Korean drama images, together with a guest violinist and two Korean singers to sing the classic Korean drama songs live. This will be a unique experience for the Grassland Concert. From dusk to starry night, parents and children are welcome to join us for a picnic on the grassy slopes of the Kaohsiung Museum of Fine Arts (KMFA)!

The event will feature a diverse lineup of local and international performers. Performances will be held at venues such as the lakeside lawn of KMFA, the National Kaohsiung Center for the Arts (Weiwuying), and the Kaohsiung Cultural Center, Dadong Arts Center, and Kaohsiung Experimental Theater at Pier-2 Art Center. The Environmental Dance will expand the field further, adding Linyuan, Dashu, Liouguei, Hamasen, and the Taiwan Pineapple Museum, among others. These elements will integrate the landscape characteristics and dance together with local audiences.

In addition to the Kaohsiung Symphony Orchestra, Kaohsiung Chinese Orchestra, and international artists, as well as domestic and foreign theater stars, the self-produced flagship opera "Rigoletto" features a star-studded cast. The festival will also feature Japanese Kageboshi Theater Company with their acclaimed production of "GeGeGe no Kitarō," a shadow-painting play, and Spanish Angelic Puppet Theatre Company with "Lemba's Dream Home." These performances are designed to appeal to parents and children alike, with the goal of fostering a shared sense of joy. The KSAF Experimental Theatre, which continues to garner enthusiasm and popularity among audiences, is preparing four new plays and the highly anticipated Taiwanese Opera. We would like to thank our loyal fans for their patience and look forward to offering a wider range of program options to meet the diverse preferences of our audience.

From the end of February through July, KSAF would like to thank its audiences for their anticipation. Please mark your calendars. We look forward to seeing you again in the spring and summer.

世界上光的光

Conducted by
Yang Chih-chin



二二八紀念 草地音樂會

**Brightest Light
in the World**

February
28
Grass
Concert

Performed by

Ilid Kaolo

Lin Zongsheng

Kaohsiung Chamber Choir

Kaohsiung Symphony Orchestra



[Program]

- A Hundred Years of Taiwanese Music:
Mountain Train / Bāng Chhun-hong / If I Open My Heart's Door
- If Tomorrow Is the Next Life
- Winter Flowers Bloom at Night
- The Rice Dumpling Vendors / If I Open My Heart's Door
- Repairing a Broken Net / The Ordeal of a Flower /
Four Seasons of Red Leaves
- Diu Diu Dang Ah / Youth Ridge /
Bo-dow Manbo / Mountain Girl Getting Married
- Angel of Formosa
- etc.

2025

2.28

Fri. **19:00**

Lakeside lawn of KMFA

Each person is required to
have a ticket to enter.

ORGANIZERS

Bureau of Cultural Affairs, Kaohsiung City Government
Kaohsiung Philharmonic Cultural & Arts Foundation
Kaohsiung Museum of Fine Arts

More information



  高雄春天藝術節

Ticket information will be made available on the KSAF website and Facebook page.





Matilda in Concert
 MATILDA 電影交響草地音樂會
 小魔女瑪蒂達

3/8-9 Sat., Sun. 19:00
 Lakeside Lawn of KMFA Tickets: NT\$ 499 Buy 4 and get a 10% discount
 Conductor | Wu Yao-yu Performance Unit | Kaohsiung Symphony Orchestra



 **KSAF**
 2025 16TH

Organizers  高雄市政府文化局
 Bureau of Cultural Affairs Kaohsiung City Government
 Tickets via  OPENTIX
 開票 藝文生活

財團法人高雄市愛樂文化藝術基金會
 Kaohsiung Philharmonic Cultural & Arts Foundation

 高雄非立美術館
 KAOHSIUNG MUSEUM
 OF FINE ARTS

 THIS STAR PICTURES
 © 2025 This Star Pictures, Inc. All Rights Reserved.

韓劇OST

星空交響

草地音樂會

K-Drama OST

Grassland Concert



Sam Kim



Kim Na-young

Conductor

Wu Yao-yu

Guest Concertmaster & Violin Solo

Kim Mi-jung

(MOST Orchestra)

Kaohsiung Symphony Orchestra

3.15.16

Sat.

Sun.

19:00 Lakeside lawn of KMFA

Organizers 高雄市政府文化局 財團法人高雄市愛樂文化藝術基金會

Kaohsiung City Government

Kaohsiung Philharmonic Cultural & Arts Foundation



高雄市民美術館
KAOHSIUNG MUSEUM
OF FINE ARTS

Production MOST CONTENTS

Sponsored by

聯邦銀行

HORIZON

隆興鋼鐵

Tickets via OPENTIX

Tickets NT\$ 899 Buy 4 and get a 10% discount

Link for tickets



星 海

郭勇德與
高雄市國樂團

PROGRAM

Phang Kok-jun: Symphonic Floras

Jiang Ci-liang: Catching Wind II - Aftertaste of Thorns: Rambutan

Wang Chen-wei: Double Zhongruan Concerto "The Sisters' Islands"

Liu Xi-jin: Gaohu Concerto "Legend of the Merlion"

Chow Jun-yi: The City of Tomorrow

Lo Wei-lun: Admiral of the Seven Seas

Starry Ocean

Quek Ling-kiong with KCO

Conductor |
Quek Ling-kiong

Zhongruan |
Chiu Chieh-an

Gaohu |
Peng Li-ting

Zhongruan
Wu Ju-ching

3/22 Sat. 19:30

WEIWUYING CONCERT HALL

TICKETS: NTS 300 • 500 • 700 • 900, 1200



聯邦銀行 10% off when purchased using the Union Bank of Taiwan credit card

環境舞蹈



Free

Being a Human in the Place Closest to the Sky

- 🕒 3/22 Sat. | 3/23 Sun. 16:30
- 📍 Baosing Temple, Dakeng, Dashu Dist.

The Golden Journey

- 🕒 3/29 Sat. | 3/30 Sun. 17:00
- 📍 Taiwan Pineapple Factory

Way Takao

- 🕒 3/29 Sat. | 3/30 Sun. 17:00
- 📍 The platform of Takao Railway Museum / Hamasen Railway Cultural Park

Go to Liouguei-Easy to Change Your Mind

- 🕒 4/4 Fri. | 4/5 Sat. 16:00
- 📍 Hongkunyuan, Chitianwu, Liouguei

Buddha Police

- 🕒 4/5 Sat. | 4/6 Sun. 16:30
- 📍 Former Dinglinzhibian Police Station

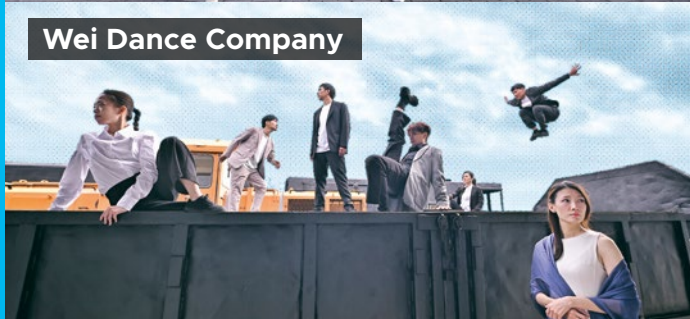
Autumn Cedar Sáo-Tsài



Hsi Dance Company



Wei Dance Company



Solar Site Dance Theatre



Blooming Grass Cooperative





The Sparkling Life of Hamasen

The First Financial Street

Hamasen is Taiwan's first reclaimed land development, featuring modern and well-organized streets. It is considered the origin of modern Kaohsiung and the first area to receive running water, electricity, lights, and telephones. The construction of the harbor, railway, and urban plan a hundred years ago led to economic development and population influx, attracting financial and trade companies. During the Japanese colonial period, the area's financial and commercial significance was recognized, leading to its designation as the "First Financial Street."

Former Sanhe Bank

Thirty Four Bank commenced operations in 1921 and was subsequently renamed Sanhe Bank Kaohsiung Branch in 1933. The building on Linhai 1st Road boasts a history spanning over a century and was designated as a cultural heritage site in 2003, thereby establishing itself as the oldest bank building in Kaohsiung. In 2019, the building underwent a restoration, and through a collaboration between the public and private sectors, the adaptive reuse of the "Hamasen Coffee Shop" space allows more people to enter the historic site, appreciate the beauty of Japanese-Western eclectic architecture, and witness the historical splendor of Hamasen.

Former Sanhe Bank / Hamasen Coffee Shop

📍 No.7, Linhai 3rd Rd., Gushan Dist., Kaohsiung City ☎️ 07-5315770 🕒 10:00-19:00

Contemporary Cave of Curiosity: Snake

2024.11.22-2025.04.13

Dayong Warehouse C5

Snakes are generally considered unknown and feared, but in Eastern and Western myths and religious beliefs, they are often revered by various ethnic groups. Many artists are inspired to incorporate serpentine elements into their work.

Exhibitor Tjavaus Alunguyan, a national treasure, integrates the traditional totem of the Paiwan tribe and the belief in the 100-pace snake into her embroidery works, retelling the legend of the Paiwan tribe. Alunguyan has also collaborated with fashion designer Justin Chou to create clothing designs, introducing a novel visual aesthetic to Taiwan's fashion industry.

American artist Heather Beardsley's series of sculptures, *Snakes in the Garden*, invites visitors to explore the shadow of snakes, conveying the metaphor of snakes in the Western world and reflecting on the existence and end of the Garden of Eden.



have a ___ dream

2024.12.20-2025.5.18

Dayi Warehouse C7: A.C.G.N. Warehouse

The exhibition, *have a ___ dream*, recreates dreamscapes through a rich variety of illustrations, comics, and cross-media works, taking visitors into dreamland from a unique perspective and revealing the colorful imaginations of the artists' minds!

The *cozy dreams* exhibition area opens with the works of the music studio Spirit Records, whose relaxing musical rhythms transport visitors into a surreal dream atmosphere. Bio_ogist, who specializes in using fabric as a creative medium, has created a series of small stuffed mice that travel through a giant piece of golden cheese, showing humorous creativity that will make you laugh.



The Betel Palm: Chen Wei-chi Solo Exhibition

2.4-2.23

Dayi Warehouse C8-1: Young Art Space

Artist: Chen Wei-chi

The term "tshenn-á-tsâng" is derived from the Taiwanese Hokkien pronunciation, meaning betel palm.

The artist is originally from Puli, Nantou. The betel palm is a common sight on the region's mountainsides, playing a role in shaping the local landscape and collective memory. The exhibition aims to utilize the natural environment to symbolize the ecological imbalance caused by human greed and institutional injustice.



Hamasen Railway Cultural Park

Coastline Line Sightseeing Train "Hamasen Express"



The Hamasen Express transforms the 35G20060 and the 15EG8634 rolling stock into seats for children and adults, using elements commonly found on railroads such as ties, ballast, and wheels. The route commences at "1908 Takao (Old Takao Station Platform)" and concludes at "1900 Takao (Kaohsiung Harbor Inspection Subsection/Inspection Shed)". It traverses the park's pedestrian bridge, the North Signal Tower, and Kaohsiung Harbor Inspection Subsection, offering passengers a journey through the timeless grandeur of Hamasen Railway Cultural Park.



>> Timetable

The train will run on Saturdays, Sundays, and national holidays at the following times 10:00-11:30 and 13:30-18:00 with departures every half hour for a total of 14 trips per day.

>> How to buy tickets

Buy tickets at the Hamasen Train Resumption ticket counter next to the Takao Railway Museum. Or buy tickets online at Pier-2 Online Shop (<https://pier2.org/shop/>)

Railway Journey: Traveling Through Time and Space

Yancheng and Hamasen have accumulated a deep cultural and culinary heritage due to the bustle and prosperity of the port and station in the past. The Railway Journey combines literature, history, sightseeing, and most importantly, food, so that you can experience the beauty of Yancheng and Hamasen's history and culture through a guided tour while boarding the Hamasen Express.

The "Travelling Through Time and Space" tour offers a journey through the Japanese era, providing visitors with the opportunity to explore significant cultural assets and gain insight into the historical evolution of these buildings. Through this experience, visitors can envision life in bygone eras and travel back in time to appreciate the Japanese aesthetic.

Date: 2.22(Sat.)14:00-17:30

Guide: Huang Ci-wei (Kings of Exploring Takao)

Activities: ◆ Ride the Hamasen Express.

- ◆ Visit important historical buildings.
- ◆ Experience Kendo at the Butokuden (in formal Kendo uniform)
- ◆ Enjoy Hamasen snacks.



※The recommended age range for children is 6 to 12 years old, as the size limitations of kendo uniforms are a consideration.

The Adventures of Gao Siao-syong

Location: Exhibition Room 105

On a sunny day, Gao Siao-syong and Gao Siao-meei go on a school field trip to the Kaohsiung Museum of History on the Love River. While looking for the restroom, the two siblings accidentally open a magical door and meet Gao Shih-bo. Under Gao Shih-bo's spell, the two siblings travel through time and space, embarking on a century-long adventure.

The museum creates a space for children aged 5 and above to experience Kaohsiung's history and culture through a variety of themes, transforming them into a variety of media and interactive participation, so that children can learn about Kaohsiung and have fun at the same time!



Hamasen Museum of Taiwan Railway

Penglai Warehouses B7 & B8, The Pier-2 Art Center
(No. 99, Penglai Rd., Gushan Dist., Kaohsiung City)

07-521-8900 Mon. to Sun.: 10:00 to 18:00; Closed on Tue.

Located in the Penglai Warehouse complex of the Pier-2 Art Center, the Hamasen Pier-2 Line is the only five-inch-track train in Taiwan that runs regularly. It circles the Penglai Warehouse for approximately six to eight minutes each way.

The Taroko Express and Kaohsiung Light Rail trains are popular with children and adults alike.

*The Pier 2 train also offers special discounts on limited-edition merchandise at the gift shop!



The Center of Old Fongshan City History (COFCH)

No. 157-2, Guishan Ln., Zuoying Dist., Kaohsiung City 07-5888398

Tue. to Fri.: 11:00 to 17:00; Sat., Sun. and national holiday: 10:00 to 18:00;
Closed on Mon.

The Center presents the changes of Old Fongshan City from the Ming and Qing Dynasties to the present day through three-dimensional models and sound and light projections, combined with animated films. There are also many small parts in the model that move and lift with the sound and light, allowing the public to experience the drama and fun of time change and witness the historical development of Old Fongshan City in the most relaxing way.



Double Classics: FUKASAKU Kinji

By **Wu Yi-lun**

FUKASAKU Kinji is a creator who combines business and art with the ability to push the boundaries of what is possible. *In Legend of the Eight Samurai* (1983), which is based on an Oriental legend, he used an English song as the theme song, which shows his unconventionality. Taiwanese audiences are most familiar with his work *Battle Royale* (2000), which grossed more than 3 billion yen at the box office and is still considered a classic in the hearts of many. *Shogun's Samurai and Samurai Reincarnation* showcase FUKASAKU Kinji's distinctive approach to filmmaking, demonstrating his ability to break away from established frameworks and boldly adapt historical narratives to create contemporary films.

Shogun's Samurai

🎬 FUKASAKU Kinji

Tokugawa Hidetada, the second shogun of the Tokugawa Shogunate, passed away unexpectedly. His unexpected passing prompted his retainers to support Tadanaga, the youngest son he favored, and Iemitsu, who had been mentored by Ieyasu, the first shogun, before his passing. The Yagyu Clan, under the leadership of Munenori, the shogun's fencing instructor, is actively promoting Iemitsu's "Shinkage-ryū swordfighting" using various means, including unscrupulous tactics. This power struggle is resulting in conflict within and around the castle.



Samurai Reincarnation

🎬 FUKASAKU Kinji

In the 14th year of Kan-ei's reign, the Tokugawa Shogunate took action against the Catholics. Amakusa Shirou, the Catholic leader, harbored a deep resentment toward the Catholics and renounced his beliefs to reincarnate in the demonic realm, vowing to avenge the deaths of the Catholics. Utilizing his pre-mortal obsession, he successfully revives Hosokawa Gracia, Miyamoto Musashi, and the ninja Kirimaru. The Shogunate generals, seduced by Hosokawa Gracia's beauty, become corrupt. Yagyū Tajimanokami Munenori, a highly skilled swordsman, and his son Jubei, a seasoned wanderer, emerge as the final line of defense against this malevolent force.



2.16 Sun. 14:30 Jihde Hall
SiungSong Orchestra Concert 2025

- ▶ Presented and performed by SiungSong Orchestra; conductor / Chou An-ju
- ▶ Tickets: NT\$400, 600, 800
(Please refer to the ERA Ticketing System)
- ▶ Tel: 07-7248759

Many movies are common memories. These films often feature a climactic narrative, emotional highs and lows, and character-driven storylines. Through the medium of music, the narrative can transition from gentleness to passion and from excitement to intensity, creating an atmosphere that profoundly impacts the audience. We hope that this concert will awaken your passion for the artistry of movie soundtracks.



2.21 Fri. 20:00 •
2.22 Sat. 14:30, 19:30 Jihde Hall
Dacon.come Season 9 Episode 1

- ▶ Presented by Showtime Fool Comedy Company
- ▶ Performed by Dacon.come
- ▶ Tickets: NT\$600-1000
(Please refer to the OPENTIX Ticketing System)

The performance features Mancai, free talk, musical comedy, and impromptu. Kids make choices, while adults take them all! Dacon.come is prepared to offer the style they are known for in Season 9 of Dacon.come!



2.21 Fri. 19:30 Jihshan Hall
**Dancing Together:
Bagua Elementary School
Wind Music and Dance Joint Exhibition**

- ▶ Presented by Kaohsiung Municipal Bagua Elementary School
- ▶ Performed by Bagua Elementary School Wind Ensemble, Bagua Elementary School Dance Ensemble
- ▶ Tickets: NT\$200, 300 (Please refer to the ERA Ticketing System)
- ▶ Tel: 07-3718964#20

The Wind Ensemble and the Dance Ensemble are the pride of our school, and they have grown from the ground up, demonstrating their outstanding skills and character year after year. In order to witness and share this excitement, this year for the first time we are organizing a joint exhibition of the two ensembles, inviting everyone to enjoy the wonderful performances and unlimited potential of the children.



2.22 Sat. 19:30 Jhinshan Hall

Chang Ya-ching 2025 Violin Recital - Inspired by BACH

- ▶ Presented and performed by Chang Ya-ching
- ▶ Tickets: NT\$300, 400 (Please refer to the OPENTIX Ticketing System)
- ▶ Tel: 0988-325351, 07-3345226

Chang Ya-ching has reconsidered Bach's sonatas and suites for violin a cappella, and has been inspired to perform them at different stages of her life. In this concert, she will perform three pieces in the keys of G, B, and D. In addition, she has invited composer Lin Kuei-ju to create a corresponding work for violin a cappella called "Everlasting Spring Dance" in the Hengchun folks of Taiwan.



2.25 Tue. 19:00 Jihnde Hall

Enjoy the Spring Rhythm: 2025 Cianjin Junior High School Art Talent Class Joint Concert

- ▶ Presented and Performed by
Kaohsiung Municipal Cianjin Junior High School Art Talent Class
- ▶ Admission with ticket
- ▶ Tel: 07-2725981#410, 420, 470

This concert will be performed by the students of the two types of artistic talents classes of Cianjin Junior High School. The concert will feature a variety of bands from both Chinese and Western countries, hoping to showcase youth music to the public through the diversity of musical genres.



2.21-3.4 Jhih-Jhen Gallery-2

Zhumeiyuan Culture and Art Awards: The 10th National Creative Oil Painting Competition

The Zhumeiyuan Culture and Art Awards National Creative Oil Painting Competition is entering its tenth year. To encourage art enthusiasts to dedicate themselves to artistic creation, the tenth competition continues to prioritize artistic creation and is limited to size 50, to add new culture and vitality to art. This year, a total of 210 paintings participated in the competition, and 42 paintings were awarded prizes.



2.21-3.4 Jhih-Jhen Gallery-3

2025 Union Art Touring Exhibition

The Union Culture Foundation has a long history of promoting the arts, and with the sponsorship and support of Union Bank and Union Finance & Leasing, the Foundation has been committed to fostering local artistic talent and providing a stage for artists to express their vitality and creativity for over 27 years. The exhibition includes the winning works of the 22nd Union Fine Arts Impressionist Award and the 27th Union Fine Arts New Talent Award. Visitors will have the opportunity to appreciate the exceptional works of both impressionist and realist oil painting styles.

2.21-3.4 Jihh-Jhen Gallery-1

A Sympathy for Scenery: Wang Hong-yin Oil Painting Solo Exhibition

The works in the exhibition cover the diverse natural landscapes and humanities of Taiwan, including fresh landscapes, quiet streams, blue oceans, and lifelike animals such as cows, chickens, and ducks. In addition, brightly colored Taiwanese fruits and flowers accentuate the unique beauty of the land.



Dadong Arts Center

📍 No. 161, Guangyuan Rd., Fengshan Dist., Kaohsiung City
☎ 07-7430011 🌐 dadongcenter.kcg.gov.tw

2.8 Sat. 19:30

Huang Jui-ching New Year Concert: Open the Enchanting Music Box

- ▶ Performed by Ketagalan Philharmonic, Ketagalan Foundation
- ▶ Tickets: NT\$500, 800, 1000 (Please refer to the OPENTIX Ticketing System)

This concert will pay homage to the classics and look forward to a promising new year through the interpretation of the classical musicians' deep technical skills, as well as convey the beauty and emotion of Disney's popular music, inspiring the audience with the power of goodness and beauty in their hearts.



2.22 Sat. 19:30

Fa Yin Wind Band Concert

- ▶ Performed by Fa Yin Wind Band
- ▶ Tickets: NT\$100

Since its inception, the Fa Yin Wind Band has received extensive support and recognition from individuals of various backgrounds. This year, the band has adopted the approach of "learning across the ages, the young and the old together," collaborating with young people to create a musical experience for older adults to enjoy.



2.25 Tue. 19:30

Jhong Siao Junior High School Chinese Music Class Concert

- ▶ Performed by Zhong Siao Junior High School
- ▶ Admission with ticket

Since its inception, the Chinese Music Class at Zhong Siao Junior High School has achieved outstanding results and has received widespread acclaim. The performance featured the following pieces: *Yao Fong Lan Yang*, *The Eternal Sorrow of Lin'an*, *Merry Go Round of Life & Always With Me*, *The Entertainer & Saber Dance*, *Blooming*, and selections from *The Legend of Sadir*.

2.8 Sat. 19:30 2025 Ciao Chiao Cello Recital

- ▶ Performed by Kaohsiung French Horn Ensemble
- ▶ Tickets: NT\$200 ▶ Tel: 0986-677152

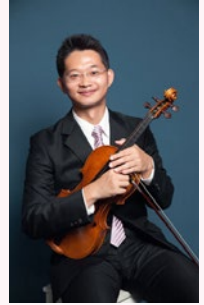
In this concert, the cello's soft and solid tone will be intertwined with the piano's skillful backing, creating an impeccable harmony between the tone and the instrument. This will lead the audience to travel through time and space to experience the profoundness and beauty of the language of music.



2.13 Thu. 19:30 2025 Chuang Meng-hsun Viola Recital

- ▶ Performed by Century Orchestra
- ▶ Admission with ticket
- ▶ Tel: 07-3985155

This concert will feature renowned violist Chuang Meng-hsun and distinguished pianist Lin Rei-ping. They will present romances by esteemed composers including Max Bruch, Johan Svendsen, Ralph Vaughan Williams, Amy Beach, and Fritz Kreisler. Additionally, Mr. Chuang will perform his adaptation of Tchaikovsky's renowned ballet, *Swan Lake*, titled *Swan Lake Suite*.



2.16 Sun. 19:00 Dream Cruise Station 5: Gratitude, Beginnings, and Future

- ▶ Performed by Bremer String Orchestra
- ▶ Tickets: NT\$250 (Please refer to the ERA Ticketing System)
- ▶ Tel: 0928-787901

The Bremer String Orchestra is an educational ensemble led by professional music educators. Its members are amateur musicians and students from music classes and string orchestras of all levels of school. The ensemble aims to bring the music into their lives and, with the guidance of their teachers, help them stand on the concert hall stage—the stage of their dreams.



2.25 Tue. 19:00 The First Japan-Taiwan Music Exchange: Futaba Kato • Mizuki Kato's Violin & Friends' Chamber Music

- ▶ Presented by Japan-Taiwan Music Exchange Office
- ▶ Performed by Japanese Soshinkai
- ▶ Admission with ticket ▶ Tel: 07-2319705

In addition to solo violin performances by Futaba Kato and Mizuki Kato from Japan, this concert will feature chamber music with other musicians Misuzu Tani, Mayumiko Kasai, and Yasushi Suzuki. The program is filled with well-known songs and is well worth the wait.

