

文化
高雄 12

2022

DECEMBER

Kaohsiung Arts and Cultural
EVENTS CALENDAR



LOVE RIVER BAY

Kaohsiung's  Annual Event

Lighting Display



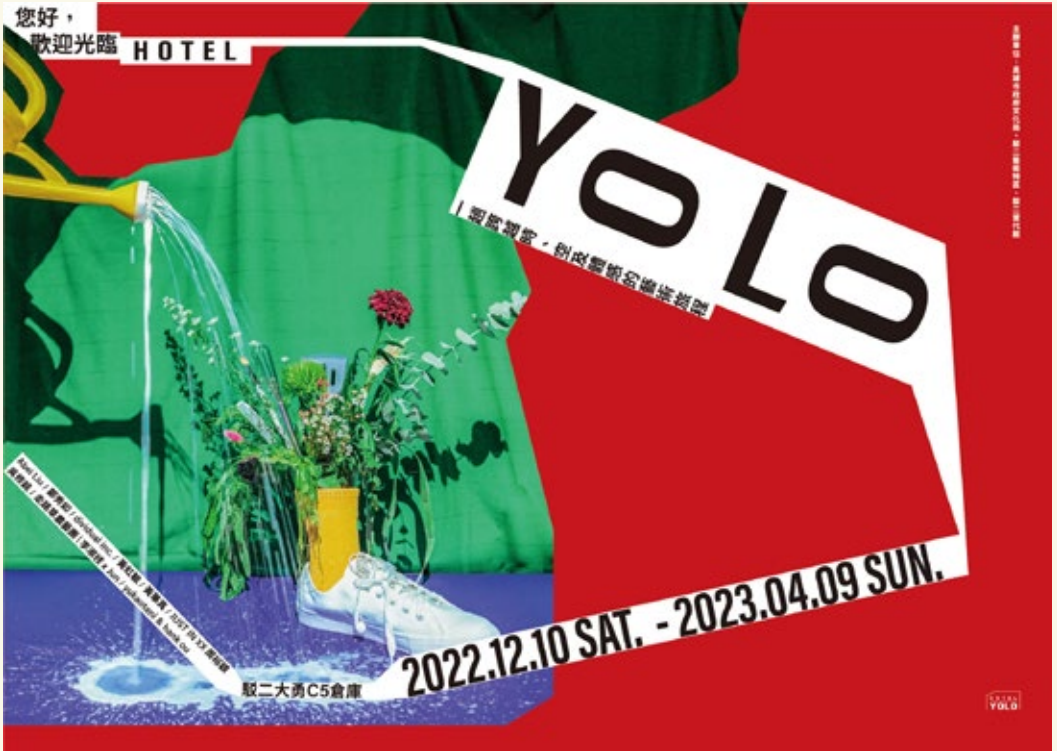
The Largest Stage of Christmas Lighting Display in Taiwan Visit Kaohsiung for Christmas and New Year

In 2022, the restrictions under the pandemic are gradually lifted, and people's lives are becoming normal. Their pent-up hearts need more spiritual food to free them. Major events such as the Taiwan Lantern Festival, Creative Expo Taiwan and Taiwan Design Expo are held in Kaohsiung to showcase the cultural and creative energy of the port city. Many cultural and artistic activities, which had been suspended due to COVID-19, also recovered vigorously. The diverse and rich culture of Kaohsiung and the enthusiastic harbor city have come alive again, making the outside world amazed!

At the end of the year, there are still many wonderful cultural and artistic activities going on in Kaohsiung, which makes people feel the strong cultural vitality of Kaohsiung. Among them, Kaohsiung's annual must-see event, the LOVE RIVER BAY Christmas Lighting Display, will launch in December. The display will surround the whole Love River Bay and building complex of Kaohsiung Music Center with romantic and beautiful lighting with Christmas elements. Last year, the first Christmas lighting show combined with smart lighting of Love River Bay was well received. This year, we will introduce new Christmas elements, so that the visitors will be immersed in a romantic atmosphere and spend a special Christmas with their families and friends in southern Taiwan.

LOVE RIVER BAY Christmas Lighting Display will run all the way through the New Year's Day holiday next year. From Christmas to New Year's Eve, the Pier-2 Art Center and Kaohsiung Music Center also offer Christmas fairs and music performances, making them the most unique and wonderful end-of-year events in Taiwan. We welcome all the citizens back home to feel the progress and beauty of this city. We also invite friends from all over the world to come to Kaohsiung, immerse themselves in the warm winter sun of the south and enjoy the magnificent year-end performances with unique characteristics. Together, we bid farewell to the old days and embrace a promising year.





Hello, Welcome to Hotel YOLO 2022.12.10-2023.4.9

Dayong Warehouse C5

YOLO: You Only Live Once!

The exhibition "Hello, Welcome to Hotel YOLO" takes the hotel as the carrier. Nine artists are invited to participate in the exhibition. Through their works, they brought the topics of "encounter, time and space, existence and absence, life and attitude" to express the emotional experience and understanding triggered by various restrictions and the sense of distance under the COVID-19.

Visitors can slowly see, think, recognize and recall in the exhibition, evoking the long-forgotten feelings in this period of stagnant or busy life, as well as the courage to be yourself. YOLO!



12.17 Sat. 15:00-16:30 "Walking Grass Agriculture: Li Shu-Zhi x Jun" Meet-and-Greet of Fusion Cuisine

Lee Shu-Zhi, who moved from Zuoying to Jiasian after her marriage, calls herself Mother Liu. She loves home cooking and recently joined various art projects of the Walking Grass Agriculture. Chef Jun, who has been in France for six years, has accumulated rich experience and solid skills in Michelin starred restaurants. This time, Jun will cook with sauced bamboo, pickled bamboo, pickled plums and other seasonal ingredients made by Mother Liu. With plum juice and Taiwanese milkfish, Jun will transform the traditional flatbread dish of South France, Pissaladier, and invite you to enjoy a feast!



Questions Not Included on Exams 3: The Modern Frankenstein's Monster in Comics

2022.9.9-2023.2.5

Dayi Warehouse C7: A.C.G.N. Warehouse

"Questions Not Included on Exams" is a series of contemporary comics that depict perspectives not covered in textbooks and focus on issues that are "not included in exams" but are closely related to our daily life.

The futuristic technologies presented in many classic sci-fi works are gradually becoming reality in real life and influencing the technological development of the world. Through The world view constructed by the creators of "The Modern Frankenstein's Monster in Comics," visitors can travel through the parallel universes of different comics and imagine the time and space in which the monsters exist.

"A.I. Monster" exhibition area uses the concept of comic artist MAE's "Monster of Memory" to create a lighting show, in order to present the memory fragments between the protagonist and his deceased relatives and A.I mimicry creatures who inherit the memory of their relatives, so as to watch how the protagonist lets go the regret of losing his deceased relatives.



12.1-12.20

Ordinary People 23

Artist: Lee Jin-Ho

Ordinary work. Ordinary people. Hello! I'm from the summer of 2018. There are emotions and stories in each piece of work, and I hope those who resonate can continue to feel the sadness.



2022.12.28-2023.1.16

Heterotopia Paradise: ZENG Yi-Qi Solo Exhibition

Artist: ZENG Yi-Qi

Heterotopia is a real and illusory existence between reality and utopia. The artist redefines the form of objects and species, engenders a new imagination with ambiguous elements of the integration of all things, and pieces together a beautiful world without moral constraints and a specific meaning in the real world.

A Night of Fantasy to the Past

史詩幻想之夜

璀璨

12/17 Sat. 19:30

Concert Hall,
National Kaohsiung Center for the Arts
(Weiwuying)

Play the track of
the times



Conducted by
Tseng Wei-Yung



Erhu
Wang Ming-Yu



Pipa
Chuang Hseuh-Man

Emerging conductor Tseng Wei-Yung, who won the International Conducting Competition for Chinese Music at Hong Kong, and the concertmaster of Taipei Chinese Orchestra Wang Ming-Yu, KCO pipa player Chuang Hseuh-Man teamed up with KCO to present four classic masterpieces. The concert will embody the stories, contemplations, and affections about the dynasties in different period of time. When the music plays, the fantasy travels, and the immortal story of a thousand years will laugh or cry with you. To engage in a dialogue with the history, Kaohsiung Chinese Orchestra invites you to join our time travel with the music in A Night of Fantasy to the Past at the end of 2022.

PROGRAM

Ng, Cheuk-Yin: Tang Resonating

Liu, Wen-Chin: The Great Wall Capriccio

Gu, Guan-Ren: Hua Mulan

Pen, Xiu-Wen: The Terra Cotta Rhapsody



今夜百老匯

BROADWAY

Tonight

BEN DAVIS
DINA MORISHITA

12 / 24
SAT.
Jhinde Hall,
Cultural Center
19:30

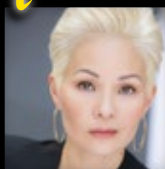
Conducted by **Yang Chih-Chin**



United States

Ben Davis

Tony Honored
Broadway actor
and singer

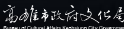


United States

Dina Morishita

Starred as
main actress
in "Miss Saigon"

Excerpts from "Phantom of the Opera," "Les Miserables," "Beauty and the Beast,"
"Frozen" and "The Little Mermaid" are all on Broadway Tonight!

Presented by  財團法人高雄市愛樂文化藝術基金會
Kaohsiung Philharmonic Cultural & Arts Foundation

Tickets: NT\$ 300 / 500 / 700 / 900 / 1200 / 1600 / 2000 / 2500

Tickets via  OPENTIX
票 閣 院 文 化 生 活

Sponsored by  聯邦銀行



2022

JHUANG TOU
FRINGE
FESTIVAL 12th

12 DEC.
PROGRAM
INTRODUCTION



Chun-Mei Taiwanese Opera Troupe

12/3 Sat. 19:00 Liouguei Dist. — Liouguei Ikedaya

One day, the queen Liu Ruilian on her way back from the battlefield met concubine Su Xiuying who rode in a sedan chair only for the queen. The two women, who hated each other, had a big quarrel. The concubine angered Rilian and was beaten. The concubine complained to the emperor, although the emperor was distressed and angry, he blamed the concubine because of Ruilian's achievements. The concubine was very angry. She was abetted by her father and determined to take the opportunity to poison the emperor. The noble emperor, without any sense of crisis, and his bodyguard fell for her scam. Fortunately, Ruilian was prepared and protected the emperor. However, the emperor did not learn from this lesson and was still trying to protect the concubine...



**Liu Ruilian
Defended
the Kingdom**

Ming Hua Yuan (Tian) Taiwanese Opera Co.

12/10 Sat. 19:00

Cianjhen Dist. | Basketball Court, Houan Rd., Caoya Vil.

An Daoquan is a doctor, and his practice of medicine is decent. He met his childhood sweetheart Li Qiaonu by coincidence, and the two got married. One day, Jhang Shun secretly took Song Jiang to visit An Daoquan, An Daoquan treated Song Jiang's old disease, but he was not impressed with Liangshan behavior. The two people argued about their view on politics.

An Daoquan met Ping Jiaolou, who was covered with scars, on his way back. Jhang Shun said that she is the Wangs new bride, An Daoquan then escorted Ping Jiaolou to the Wangs. Wang Cheng'en found out that An Daoquan is Li Qiaonu's husband and was jealous. Wang tricked him to visit the Wang family. An Daoquan found the hidden secrets of the Wangs, but he has been caught in the trap, and ended up colluding with thieves. He had no choice but to follow Song Jiang to Liangshan.



**The Heroes of the Water
Margin-Liangshan Regrets**



KSO
樂季
KCO

Singer

Sean Lin

Singer

Tseng Hsin-Mei

An Encounter with Taiwanese Duet

Encounter: Meet in a string of songs in the musical time
Duet: Two voices sing popular songs

Let's meet at the beginning of the year in the concert hall, where award-winning female Taiwanese singer Tseng Hsin-Mei and talent show winner Sean Lin will perform with the Kaohsiung Chinese Orchestra led by conductor Kuo Che-Chen.

The two singers will interpret the classic pop songs with their clear vocals, coupled with the warm sound of the orchestra, to send New Year wishes to the music fans.

Program

At the Beginning of Year

April Rain (Suite)

Granny's Words;
Grandpa's Old Leather Shirt (Suite)

Black Dog at the Peak;
Dare to Go to the Cemetery (Suite)

Spring Flowers Looking at Dew

Want to Play the Same Melody;
The Sound of Rain; Nobody Knows (Suite)

The Puppet Opera Suite

Heart Blossoms; Sleepless (Suite)

The Drumbeat; Express Love Letter

2023
01 / 08 SUN Jihde Hall,
14:30 Cultural Center

Conducted by
Kuo Che-Chen

Performed by
KCO 高雄市國樂團
KAOHSIUNG CHINESE ORCHESTRA

Presented by

高雄市政府文化局
Bureau of Cultural Affairs Kaohsiung City Government

財團法人高雄市愛樂文化藝術基金會
Kaohsiung Philharmonic Cultural & Arts Foundation

Tickets: NT\$ 300.600.900.1200.1500.2000

Tickets via  OPENTIX
開票院文化生活

KSO 高雄市交響樂團
Kaohsiung Symphony Orchestra

附設 青少年交響樂團
Youth Symphony Orchestra

Conducted by
Twu Hwei-Ming

Flute
Wang Fu-Ji

From
Northland

來自北國

Nicolai: Overture from "The Merry Wives of Windsor" —

Nielsen: Flute Concerto —

Tchaikovsky: The Nutcracker Suite, Op.71a —

Tchaikovsky: Capriccio Italien, Op.45 —




2023.

1.8

Sun.
15:00

**Dadong
Arts Center**

Tickets: NT\$ 200 300 500 Tickets via  **OPENTIX**

高雄院文化生活

Presented by  高雄市政府文化局

財團法人高雄市愛樂文化藝術基金會
Kaohsiung Philharmonic Cultural & Arts Foundation

就是愛炫 II

協奏之夜

Just Love String Orchestra II
Concerto Night

2023.
1.1 SUN.
15:00

**Dadong
Arts Center**

Conducted by — **Li Ying**

Sheng — **Syu Hong-Chen
Hong Shao-Qing**

Chinese Flute — **Ni Bao-Han**

Cello — **Sun Zi-Qing**

Pipa — **Sie Yu-An**

Erhu — **Lin You-Chen**

Yangqin — **Huang Yu-Ting**

KCO 高雄市國樂團 附設 青少年國樂團
KAHSIUNG CHINESE ORCHESTRA YOUTH CHINESE ORCHESTRA

Program

Sui Li-Jun: *Shamanic Dance*

Jen Chung: *Years*

Jhu Heng-Qian: *Saliha (Arranged by Lu Liang-Hui)*

Qian Zhao-Xi: *Tianshan's Rhapsody*

Wang Dan-Hong: *Cloud and Flower Fantasies*

Li Bo-Chan: *Chant on Strings*

Jamie Lin: *The Beauty of Dawusha*

Liu Chang-Yuan: *The Dance to the Carnival*

Tickets: NT\$ 200 300 500 Tickets via  **OPENTIX**

高雄院文化生活

Presented by  高雄市政府文化局

財團法人高雄市愛樂文化藝術基金會
Kaohsiung Philharmonic Cultural & Arts Foundation



The History of Kaohsiung

The museum creates an experience space for children over the age of five. It personifies Kaohsiung as a boy named "Kao Siao-Hsiung", his sister "Kao Siao-Mei" and a magician "Kao Shi-Bo". It matches the eyes of children and guides them with multiple display media and interactive ways so that children can have fun and learn about Kaohsiung.



Measuring A-kong-tiàm

Kaohsiung Exhibition

Starts on 12/29

Venue: **Exhibition Room 201**

"A-kong-tiàm Street" formed 300 years ago. The Basket Market has been held for more than two centuries. The construction of A-kong-tiàm Reservoir took a total of 11 years across the two regimes. It takes 10 years to train a fighter pilot. Some 700 factories make up the world's densest screw cluster. All kinds of data make a distinct impression of Gangshan. Let us analyze the food, military, ethnic groups, industry and commerce by time and space so as to measure the history of Gangshan.





A scale model of Zhuifen Station at Hamasen Museum of Taiwan Railway

The entire coastal line was launched on October 9, 1922. Since then, the Western Trunk line has been divided into two parts at Zhunan, Miaoli, with one known as the mountain line going from Miaoli to Taichung and down to Changhua. The coastal line is roughly parallel to the mountain line and is along the flat coastal area in the west. It runs from Zhunan to Houlong, Tongqing, Yuanli, Dajia and Shalu and connects to mountain line at Changhua. The total length of the railway is 90.2 kilometers. This year marks the 100th anniversary of the launching of the coastal line. The stations along the coastal line have their own features, including the century-old wooden stations at Tanwen, Dashan, Xinpu, Rinan and Zhuifen. The Qingshui station is both a historical building and the first brick station of the coastal line. Dajia Station is the largest station on the coastal line, and its roof with six triangular shapes attracts railfans. These stations have not only driven the development of the surrounding area for a century, but also witnessed the legacy of railway culture. They are the common memories of the local people, linking the north-south transportation, the past and the future, as well as people.

HAMASEN
PIER2 LINE



Hamasen Pier 2 Line is located at Penglai Warehouse in The Pier-2 Art Center. It was the first fixed five-inch gauge railway in Taiwan. Each carriage of the train can hold 300 kg and is suitable for adults and children. It takes about six minutes to circle the art center on the "Circular Light Rail." The special experience is very popular among tourists.

Ticket Information

Hamasen Museum of Taiwan Railway
Regular: NTD**149**
Concession: NTD**99**

Hamasen Pier2 Line
Regular: NTD**149**
Concession: NTD**99**

Opening Hours

Mon. to Thu.: 10:00 to 18:00
(Ticket sale ends at 17:30.)

Fri. to Sun.: 10:00 to 19:00
(Ticket sale ends at 18:30.)

Closed
on Tue.



Double Classics:

A Comic Meditation with Laughs and Curses: Juzo Itami

Unlike traditional Japanese films that mourn the traditional Bushido spirit or lament the collapse of established values, Juzo Itami's *The Funeral* and *Tampopo (Dandelion)* re-establish a framework to examine social culture. Whether it's the actor couple and an absurd family in *The Funeral* or the ramen restaurant owner and his customers in *Tampopo (Dandelion)*. He uses exaggerated comedy techniques to make ordinary people ridiculous with true satire. Juzo Itami once said, "My films are fun and entertaining, because without the audience, there is no film." Therefore, Juzo Itami's films can always satisfy audiences with different needs and present life in a unique comedy style.



The Funeral (4K Remastered)

- 12.03 Sat. 18:30 Reel One
- 12.06 Tue. 16:30 Reel Two
- 12.10 Sat. 20:30 Reel One
- 12.11 Sun. 16:30 Reel Two
- 12.13 Tue. 19:00 Reel One
- 12.14 Wed. 19:30 Reel Two
- 12.15 Thu. 14:30 Reel One
- 12.22 Thu. 17:00 Reel One
- 12.29 Thu. 18:30 Reel Two



Tampopo (Dandelion) (4K Remastered)

- 12.02 Fri. 18:00 Reel One
- 12.04 Sun. 19:00 Reel One
- 12.09 Fri. 13:30 Reel One
- 12.11 Sun. 18:00 Reel One
- 12.14 Wed. 16:30 Reel One
- 12.15 Thu. 17:00 Reel One
- 12.21 Wed. 19:00 Reel One
- 12.21 Wed. 16:30 Reel Two
- 12.28 Wed. 18:20 Reel Two

12.3 Sat. 10:30, 14:30 • 12.4 Sun. 10:30, 14:30 Jihde Hall

2022 Shima Shima Tora no Shimajirō Theater: The Little Monster

- ▶ Presented by Benesse ▶ Performed by Ifkids Theatre
- ▶ Tickets: NT\$400, 500, 700, 900, 1100, 1300
(Please refer to the ERA Ticketing System)
- ▶ Tel: 02-23419898



Shimajirō went to the birthday party of the little monster with good friends, and suddenly everyone became very strange. Flappie jumps all the time; Mimi-Lynne's voice becomes ugly; Nikki's movement is very slow; the little monster's mother and father become two flowers. How can Shimajirō and his good friends help the little monster?

12.7 Wed. 19:30 Jihde Hall

Concert by NSYSU Department of Music Orchestra: Star of Si Wan

- ▶ Presented and performed by Department of Music, National Sun Yat-sen University
- ▶ Admission with ticket. Please contact the Department of Music, National Sun Yat-sen University.
- ▶ Tel: 07-5252000#3331

The Department of Music at National Sun Yat-Sen University is committed to promoting the culture of the performing arts and enhancing the quality of life of the people in southern Taiwan. Every semester, the orchestra of the Department holds concerts to provide more opportunities for people to enjoy classical music and contribute to the community through the beauty of music.



12.10 Sat. 19:30 Jihde Hall

Our 20s

- ▶ Presented by Kaohsiung Chamber Choir
- ▶ Performed by Kaohsiung Chamber Choir A, Kaohsiung Chamber Choir B
- ▶ Tickets: NT\$300, 500, 800 (Please refer to the OPENTIX Ticketing System)
- ▶ Tel: 07-2222358



Kaohsiung Chamber Choir will hold the 20th anniversary concert at the end of 2022, hoping that we could go forward in the future and continue to bring every friend who supported and encouraged us with its songs. We hope you can share this moment with us.

12.11 Sun. 14:30 Jihde Hall

FCU 60th Anniversary Alumni Concert

- ▶ Presented by Kaohsiung Fengyuan Choir
- ▶ Performed by Kaohsiung Fengyuan Choir, FCU YaFeng Alumni Chinese Orchestra, Nan-Yin Chinese Orchestra, Neo-Classical Chamber Ensemble, Changhua City Orchestra
- ▶ Tickets: NT\$300, 500, 800 (Please refer to the ERA Ticketing System)



This concert includes singing, Chinese and Western music, chorus, traditional music and classical music, with delicate timbre, emotional notes and phrases. The arrangement of the music is rich and diverse, with solid phrases and pious chanting, which fully show the characteristics and beauty of different music.

12.17 Sat. 16:00 Jihnde Hall

2022 Eason Lee Concert in Kaohsiung

- ▶ Presented by Sheng Jun Entertainment ▶ Performed by Eason Lee
- ▶ Tickets: NT\$1800, 2800, 3800, 4800 (Please refer to the Ticket Plus Ticketing System)

From winning the title of "Super Idol" to releasing his solo album "Deep Breath" to blossoming in the "Bing Bing Show", Eason Lee has experienced many ups and downs along the way, including the bitter frustration of falling down and the sweet comfort of fame, which all become the essence of his music.



12.20 Tue. 19:00 Jihnde Hall

Giacomo Puccini: La bohème

- ▶ Presented by NKNU Department of Music, Kaohsiung City Wind Orchestra
- ▶ Performed by Conductor/Wang Jhan, orchestra/NKNU Orchestra, choir/NKNU Department of Music Choir, Sih-wei Primary School Choir
- ▶ Tickets: NT\$ 300, 500, 800, 1000, 1500, 2000 (Please refer to the ERA Ticketing System)
- ▶ Tel: 7-7172930#3302

The Department of Music at National Kaohsiung Normal University aims to showcase music performances and cultivate outstanding talents in the music industry. This year, it will integrate multimedia, performing arts and cross-disciplinary majors from Kaohsiung and Pingtung, featuring outstanding domestic singers and outstanding faculty and students of the department, to enhance the performance of opera in southern Taiwan.



12.24 Sat. 19:30 Jihnde Hall

Broadway Tonight

- ▶ Presented by Bureau of Cultural Affairs, Kaohsiung City Government; Kaohsiung Philharmonic Cultural & Arts Foundation
- ▶ Performed by Kaohsiung Symphony Orchestra, Ben Davis, Dina Morishita
- ▶ Tickets: NT\$300, 500, 700, 900, 1,200, 1,600, 2,000, 2,500 (Please refer to the OPENTIX Ticketing System)
- ▶ Tel: 07-7436633

Tonight, we will sing you Broadway hits all night long! Two well-known singers from Broadway, Tony Award winning musical actor Ben Davis and Dina Morishita for Miss Saigon, will join the Kaohsiung Symphony Orchestra to bring a number of Broadway classics.



12.25 Sun. 14:30 Jihnde Hall

Tamakko-za with Drums and Drama “Donda Universe Taiko”

- ▶ Presented by Do It Smart Co.,Ltd.
- ▶ Performed by Tamakko-za with Drums and Drama
- ▶ Tickets: NT\$300, 400, 500, 600, 800, 1000 (Please refer to the ERA Ticketing System)
- ▶ Tel: 02-27785596, 07-2256360

Music can be a story, and it can be fun! Taiko Troupe "Tamakko-za" is specially designed for children to present amazing Taiko songs full of vitality. Besides, various instruments and props are interwoven to create interesting short plays.



12.2 Fri. 19:30 • 12.3 Sat. 14:30, 19:30 • 12.4 Sun. 14:30
Rainy Port Keelung: Musical

- ▶ Performed by 3Aqua Production Co., Ltd.
- ▶ Tickets: NT\$500, 800, 1308, 1500, 2280, 2600
(Please refer to the OPENTIX Ticketing System)

In 1945, the Pacific War ended and Li Jhao-Wei returned to Keelung. In Keelung, there were Jhang Siao-yu, who was waiting for him in Taiwan, Lin Minghua, a Taiwanese-Japanese landlord, Li Yuande, his sister who was longing for the liberation of Taiwan, and Chen Yu, a military officer's daughter who came to Taiwan with the KMT government. In 1947, a series of riots broke out over the smuggling of cigarettes...

**12.5 Mon. 19:00**
FHSH 30th Anniversary Concert

- ▶ Performed by National Feng-Hsin Senior High School
- ▶ Tickets: NT\$100

The FHSH concert upholds the concept of combining classical and modern, tradition and creation, and is committed to presenting the best images to the audience in order to create a Michelin 3-starred audio-visual feast.

12.7 Wed. 19:30
**The Graduation Performance of Class 2022,
Seven-Year-Continuous-Program,
Tainan University of Technology: 00-139.30**

- ▶ Performed by Tainan University of Technology
- ▶ Tickets: NT\$250, 350, 500 (Please refer to the OPENTIX Ticketing System)

This production will bring together eight unique and innovative works, which attempt to bring changes to the body and work through multiple challenges, and to present the audience a fantastic sensory feast.

**12.11 Sun. 14:30**
"A Third of Movement" Concert

- ▶ Performed by Little Note Chamber Orchestra
- ▶ Tickets: NT\$100, 200 (Please refer to the ERA Ticketing System)

The concert is jointly organized by the I-SHOU University Wind Band and Shi Yin Wind Band of Shih Chien University (Kaohsiung Campus) and features a performance of the French horn concerto by Yang Nai-Jie.

**12.15 Thu. 19:30**
2022 KMU Singers Winter Concert

- ▶ Performed by KMU Singers
- ▶ Tickets: NT\$300, 500, 800, 1000 (Please refer to the OPENTIX Ticketing System)

The concert will start with contemporary religious song "O Emmanuel", followed by a number of rhythmic spirituals such as "Somebody Talkin' Bout my Jesus", "Swingin with the Saints" and native ballads like "Eighteen Girls". It will end with a series of festive Christmas songs.

12.17 Sat. 19:30 • 12.18 Sun. 14:30

2022 Tsoying Senior High School Dance Performance

- ▶ Performed by Tsoying Senior High School
- ▶ Tickets: NT\$200, 400, 500 (Please refer to the OPENTIX Ticketing System)

In order to show the achievements of more than 30 years of education, this performance features nine dances by famous choreographers from all over the world and alumni, including ballet, modern and Chinese dance.



12.23 Fri. 19:00

Christmas Concert in Dadong

- ▶ Performed by Kaohsiung Evergreen Choir
- ▶ Tickets: NT\$300, 500, 800, 1000 (Please refer to the ERA Ticketing System)

As the pandemic is raging, let's comfort people with songs and performances and wish everyone a safe and peaceful life. On Christmas Eve, join the choir to enjoy the Dadong Dadong Arts Center!

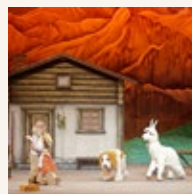


12.24 Sat. 14:30, 19:30

Heidi, Girl of the Alps

- ▶ Performed by Guyin Galaxy Children's Theater
- ▶ Tickets: NT\$300, 400, 500, 600, 800, 1000, 1200 (Please refer to the OPENTIX Ticketing System)

Heidi, whose parents both passed away, was taken to the Alps where her grandfather lived. Heidi quickly wins her way into her grandfather's heart with her enthusiasm and intelligence. One day, her aunt suddenly took Heidi to Frankfurt to accompany wheelchair-using Clara. Day by day, Heidi missed her grandfather very much, but could not bear to leave Clara. What would she do?



12.29 Thu. 19:30

Dance with You

- ▶ Performed by Kaohsiung Municipal Dingjin Junior High School
- ▶ Tickets: NT\$300, 400 (Please refer to the OPENTIX Ticketing System)

In the era of the pandemic, we are grateful for your participation in our "dance" and feel the enthusiasm and efforts of the dancers on the stage. We look forward to integrating the dance into the daily life of the people and making high-quality culture and art take root in southern Taiwan.



12.31 Sat. 19:30

2022 Clowen Ballet 10th Anniversary Performance

- ▶ Performed by Clowen Ballet
- ▶ Tickets: NT\$300, 400, 500 (Please refer to the ERA Ticketing System)

2022 Clowen Ballet's 10th Anniversary Performance features a mixture of elegant and detailed selections of classical ballet codes, newly created codes, basic demonstrations of ballet, and ballet codes for competition throughout the years!

