

Taiwan Design Expo'22 in Kaohsiung twdesign.tw

2022 台灣設計展在高雄

設
計
台
灣

台
灣
設
計

twdesign.tw

Megaport of Kaohsiung Welcomes the World Trend by an Island of Design

Ten years ago, the 2012 Taiwan Design Expo was held at Pier-2 Art Center in Kaohsiung. With the opening of the Penglai warehouses, it brought the latest and most contemporary design energy at that time. Ten years later, the 2022 Taiwan Design Expo will return to Kaohsiung again. With the theme of "twdesign.tw", it will demonstrate the power of Taiwan design, and make Kaohsiung a global city.

The main exhibition venue of Taiwan Design Expo is Kaohsiung Penglai Commercial Port, which used to be an "economically developed island". This time, it becomes an "island of design", presenting the creative potential of Kaohsiung with the momentum of the Port of Kaohsiung. Seven Kaohsiung historical sites will be transformed into urban exhibition areas. From a historical perspective, they will present Kaohsiung's creative strength accumulated over the past 100 years and expand the city's future with the power of design. In addition, it also introduces dynamic and static design related activities in the 38 districts of Kaohsiung City. We are looking forward to presenting Kaohsiung's broad vision and enthusiastic port characteristics to the world once again with new urban design and exhibition activities.

The main visual design shows the characteristics of a marine city with a blue color, while the shuttling yellow lines echo the forward-looking design power of Taiwan. The waves are layered and spread, responding to the theme (twdesign.tw) of this year's design expo. It symbolizes the communication and collision between Taiwan and the world in design, and makes Taiwan shine in the waterway of the world. The breaking waves on the sea represent ships driven by Taiwan's design power, full of creativity and exporting Taiwan's design energy.

The 2022 Taiwan Design Expo will be held on October 7th. We invite you to visit Kaohsiung and experience "twdesign.tw" in the city with us among the mountains, rivers and ports of Kaohsiung.

10.07
Fri
to
10.23
Sun
2022

VENUE

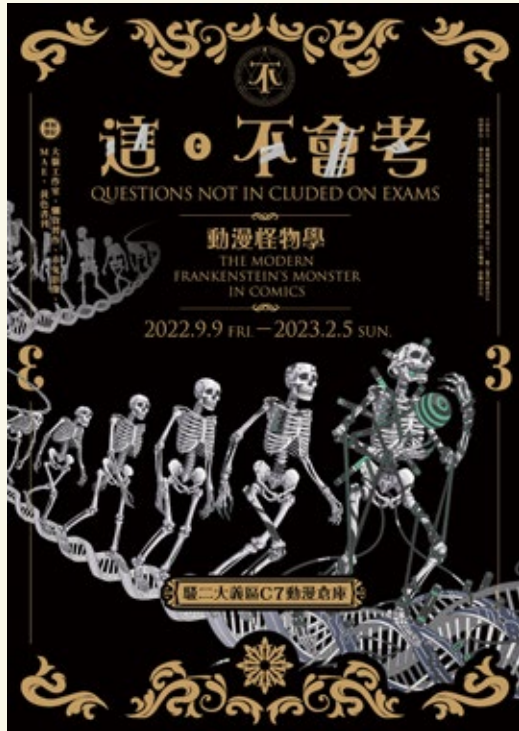
Islands of Design: Penglai Harbor Commercial District, Kaohsiung
Kaohsiung Harbor Museum / KW4-2 / KW4-3 / KW5 / KW6 / KW7 / No.6 Berth / No.8 Berth

Urban Exhibition Area: 7 Kaohsiung Historic Sites

Trader Building/Former Patriotic Women's Association Hall /
Red brick house in shinhama district 1-chome / Takao Railway Museum(North Tower) /
Syongjhen North Gate / Sizihwan Bay Tunnel / Former Tangrong Brick Kiln

Design Response:

Urban Space in 38 Districts of Kaohsiung



**Questions Not Included on Exams 3:
The Modern Frankenstein's Monster in Comics**
2022.9.9-2023.2.5

Dayi Warehouse C7: A.C.G.N. Warehouse

Will the specimens and fossils of the future be the remains of mutants and robots?

Through contemporary animation works, the exhibition draws a perspective not mentioned in the textbooks but closely related to our lives.

With the rapid development of modern science and technology, cool tech appears only in science fiction works has gradually come true. Gene editing can already alter human DNA to change the genes of babies, and big techs are developing artificial intelligence that mimics the voice of a deceased loved one to interact with users. The desire to be a creator leads to the birth of Frankenstein's monsters.

The artificial monsters in the science fiction and animation works are the imagination of the future technology as well as the fables of contemporary society. "Questions Not Included on Exams 3: This Modern Frankenstein's Monster in Comics" takes "Frankenstein's monsters" as the theme, and includes four sessions, "mechanical biomimetic monsters", "mimic A.I. monsters", "mutant monsters" and "Who is a Monster?". These sessions show the impact of the development of science and technology on society through the monsters in the works, and let people think about the relationship between science and technology and human beings.



**Shape of Hope
Taiwanese x Japanese Designers' Joint Exhibition**
5.6-10.30

Dayong Warehouse C5

The Shape of Hope exhibition is the fourth physical exhibition of the "HOPE" project. The project started in 2015 New Taipei Water Park Fire. While looking at the pictures of the fire, the designer Lin Weijhe was sad, but also thinking about how the designer can support the victims. Therefore, with the theme of hope, he summoned designers from Taiwan and Japan to create images and make postcards for charity sale to raise donations and convey encouragement for victims. The "HOPE" program continues to collect hopes. In addition to working with more designers from Taiwan and Japan, it has also become a sustainable program.

Hope guides the direction of life. In the three ceremonial exhibition areas of "Shape of Hope", the designers present abstract hope in tangible form, hoping to bring positive and stable energy in the uneasy social atmosphere. They also expect that visitors could pass this power to the people in need, so as to make hope and warmth lasting.



**2022
Young Art
Kaohsiung**
11.11-11.13
Penglai
Warehouse B4

Rookie Artists Session

Special Exhibition | Slow · Hiān-ban (很慢 · 現換)

The word "slow (很慢)" is a homophone of the Taiwanese word "hiān-ban (現換)", meaning "fresh". Twelve artists who are willing to travel in Kaohsiung are invited to participate in the exhibition, in which the "slow" pace becomes a process of experience, and the "hiān-ban" becomes a method of practice. Art fairs can have various strategies and forms. This time, we will try to stay, travel, and set scenes on a smaller scale, so that people, things and objects in Kaohsiung can become the objects of artists' dialogue.

There is no limit to the creation of young artists.

NFT Exhibition | A Poem about Digital Twin

Metaverse became the manifesto for virtual worlds at the end of 2021, and NFT became the hottest keyword of the year. The virtual world suddenly swoops into reality and attempts to influence it, as if there were an alternate universe and reality platform. This "digital twin" phenomenon is slowly making the virtual world "synchronized" with the real world.

This exhibition features the relationship between digital twin and virtual reality in the title of dream, and also redefines the transition between dream, reality, and virtuality. Ten to twelve artists will be invited to integrate physical performance with NFT to reach the starting point of digital twin.



Ming Hua Yuan (Tian) Taiwanese Opera Co.

Ming Hua Yuan (Tian) Taiwanese Opera Co. has rich performance experience. The performance merges with the modern concept, makes the Opera more accessible, and brings the traditional Opera to the new century.

Miser

"Birds die for food, people die for money", Cin Lucai was willing to compete with his son and daughter for money. Are many of the inscrutable things in the play coincidental or ruse?

9/17 Sat. 19:00 Fengming Temple, Siaogang Dist.



Ming Hua Yuan (Ri) Taiwanese Opera Co.

Ming Hua Yuan (Ri) Taiwanese Opera Co. features Taiwan top clown actor Chen Shengzai and actress Jheng Yasheng. They use ugly art and female drama to create our oriental opera style.

The Odd Gentleman Cin Datiao

Cin Datiao is famous for his wealth, tolerance and nerve. He contrived to get a bride. However, the bride was his sister...

9/24 Sat. 19:00 Yongan Temple Plaza, Yongan Dist.



Tell on the Dumb

The third son of Kim's Pharmacy has a birth defect, and he married an ugly wife. The Buddha appears and gives his wife and himself a beautiful appearance, but is beauty only in appearance?

9/18 Sun. 19:00 Guangji Temple, Cijin Dist.



Borrow Souls from King Yan

Why did God weave blessed dreams but give them torments of pain at the same time? Ji Mingyue and Mu Yaner died unjustly, and only by borrowing their souls from King Yan could justice be done.

9/25 Sun. 19:00 Wanfu Temple Plaza, Qieding Dist.



Sunhope Taiwanese Opera Troupe

Founded in 1995, Sunhope Taiwanese Opera Troupe has a fashion and kind style. The troupe's works are both traditional and innovative. It has been selected as the performing arts team of Kaohsiung City, the Ministry of Culture and the National Culture and Arts Foundation for many times.

A Galactic Romance

The Cowherd breaks through the sky for the Weaver Girl, and the Weaver Girl weaves clouds and rain. Aquatic elves let the water flow from the sky to the earth, as the wind and rain and thunder let the Cowherd upstream.

9/24 Sat. 19:00 Luzhu Sport Park, Luzhu Dist.



Shiukim Taiwanese Opera Troupe

Founded in 1986 by Chang Shiu-Kim, Shiukim Taiwanese Opera Troupe insists on the solid basic skills, diversity of plays, stunt, performance, moving, singing, and serious attitude. Chang Shiu-Kim, Chong Jinmei and Mi Syue are the troupe's golden triangle.

Golden Beauty Island

A treasure map sparks love and hate. Is it for money or love?

9/25 Sun. 19:00 Bagua Vil. Wunsiaosih Grassland, Renwu Dist.





主場
音樂

Music



Succession Percussion Group

Succession Percussion Group was founded in 1995. The name comes from the group's desire to pass on beautiful music.

Percussion in the Village

The concert combines different percussion instruments, performance methods and combinations into diversified performance forms.

9/3 Sat. 19:00 Jishan Temple Plaza, Mituo Dist.

9/4 Sun. 19:00 Renwu Vil. Community Center Plaza, Renwu Dist.



Neo-Classical Chamber Ensemble

With the concept of a city as a cultural theater, the Neo-Classical Chamber Ensemble has been delivering innovative energy of music through high quality performances.

Travel with Musicians

Under the theme "Travel with Musicians", the Neo-Classical Chamber Ensemble will take people who cannot go abroad during the pandemic to travel around the world with their wonderful music.

9/17 Sat. 19:00 Wanfu Temple, Alien Dist.

9/18 Sun. 19:00 Hezuo Vil. Park, Siaogang Dist.



主場
戲劇

Theater



ChiChiao Musical Theatre

ChiChiao Musical Theatre was founded by Taiwan Henan Opera master Wang Hailing and her daughters Liu Jianhua and Liu Jianguo. The theatre creates a unique and innovative opera with diversified ô-phiat-á (胡撇仔) aesthetics.

The Adventures of Pinocchio ft. Monkey King, Pigsy

The play blends modern and traditional, eastern myths and western fairy tales, and conveys the story of "courage", "honesty" and "love". It is also a learning journey of accepting oneself.

9/17 Sat. 19:30 Happiness Park Performance Hall, Linyuan Dist.



Bean Theatre

Bean Theatre is a professional theater company based in Southern Taiwan. For 24 years, Bean Theatre has been producing original children's plays every year. Through performing for parents and their children, Bean Theatre has made performing arts take root and thrive in children's hearts.

Sweet Nose

Yi has a good sense of smell and is nicknamed Sweet Nose! His nose was so famous that even the emperor turned to him for help, but was it really because of his good luck?

9/18 Sun. 19:30 Cueiping Vil. Community Center, Nanzih Dist.



主場
戲劇

Theater



勇敢小火車

親子音樂會

Original Story by Lai Ma

Brave Train Children's Concert

Set off! Music and picture-book stories will bring children and adults alike on a brave summer journey.



KSO 高雄市交響樂團
KAOHSIUNG SYMPHONY ORCHESTRA

Performed by
KSO

Directed by
Lai Chia-Hsuan

Conducted by
Yeh Cheng-Te

Visual Design by
Wang Yi-Sheng

Starring:
Chen Hui-Jun, Zheng Chi-Wen

Screenplay by
Chen Yu-Bi

Lighting Design by
Lin Bing-Cheng

09/17 Sat. 15:30 **09/18 Sun. 15:30** **Jihde Hall, Cultural Center**

Tickets via **OPENTIX**
兩廳院文化生活

Tickets: \$ **300.500.700.900**

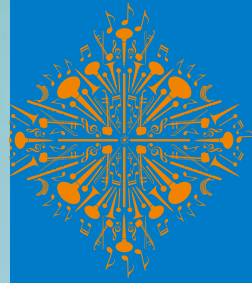
Special thanks to



Sponsored by **N次貼**
台灣商標 台灣驕傲

KSO
樂季
KCO

KCO 高雄市國樂團
KAOHSIUNG CHINESE ORCHESTRA



Double concerto brings multiple joys.

兩琴相悖

It Takes Two to
Strike a Chord

9/25 Sun. 14:30

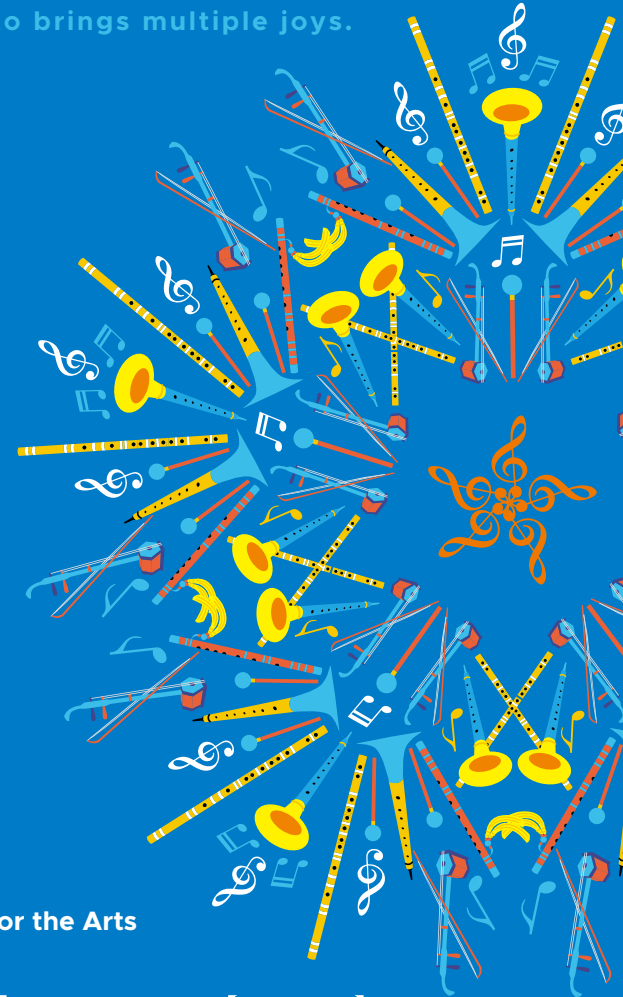
Concert Hall,
National Kaohsiung Center for the Arts
(Weiwuying)

【 PERFORMERS 】

Conductor: Liu Chiang-pin
Flute: Ou-yang Siao-yi, Ren Jhong
Erhu: Pon Li-ting, Cai Pei-yi
Suona: Kuo Jin-cai, Chou Chao-hsien
Percussion: Wang Ying-jhi, Yang Syuan-wen
Kaohsiung Chinese Orchestra

【 PROGRAM 】

Wang Yun-fei: Concerto for Two Flutes,
An Eagle Flying on a Snowy Mountain
Ren Jhong: Concerto for Two Erhus,
The Shine of the Night
Kuo Jin-cai: Concerto for Two Suonas,
Ha Chi Gu
Cheng Kuan-chih: Concerto for Two Percussions,
Legend of Azatalan
Liu Chang-yuan: *Sizhu Symphony*



Presented by **高雄市政府文化局**
Bureau of Cultural Affairs Kaohsiung City Government

財團法人高雄市愛樂文化藝術基金會
Kaohsiung Philharmonic Cultural & Arts Foundation

Tickets via **OPENTIX**
兩廳院文化生活

Tickets: \$ 300 / 400 / 500 / 600 / 800 / 1000



Do you know that the history of railways in Taiwan is over 100 years? Railway, as a flowing spatial memory, has a special meaning for people of different generations. In addition to witnessing the changes in the development of Taiwan's transportation system, the railway also tells the collective memory of the Taiwanese people. Therefore, Hamasen Museum of Taiwan Railway plans the railway scene, track and train model around the island with HO scale (1:87 scale). Setting Hamasen as the starting point, the model presents the railway history of Taiwan in the past 100 years through dynamic display. The scene combines sound and light effects with classic models of passenger trains and freight trains of different times, leading people to travel across time and space around the island. Through the interlace and transformation of time and space, the exhibition looks back at the places along the railway in Taiwan from the Qing Dynasty and the Japanese rule period to the present. The picture shows the beautiful night view of the exhibition session of Taichung Station in the Hamasen Museum of Taiwan Railway.



Hamasen Pier 2 Line is located at Penglai Warehouse in The Pier-2 Art Center. It was the first fixed five-inch gauge railway in Taiwan. Each carriage of the train can hold 300 kg and is suitable for adults and children. It takes about six minutes to circle the art center on the "Circular Light Rail." The special experience is very popular among tourists.

Ticket Information

Hamasen Museum of Taiwan Railway
Regular: NTD149
Concession: NTD99

Hamasen Pier2 Line
Regular: NTD149
Concession: NTD99

Opening Hours

Mon. to Thu.: 10:00 to 18:00
(Ticket sale ends at 17:30.)

Fri. to Sun.: 10:00 to 19:00
(Ticket sale ends at 18:30.)

Closed
on Tue.

(07)521-8900 Warehouses B7 & B8, Penglai Warehouses, The Pier-2 Art Center
(No. 99, Penglai Rd., Gushan Dist., Kaohsiung City)



Double Classics: The Grand Illusion × Paths of Glory

When it comes to war movies, many people intuitively think of movies that show war and death on the front lines. However, Jean RENOIR's *The Grand Illusion* and Stanley KUBRICK's *Paths of Glory*, two of the greatest war films of the 20th century, are different because they hardly depict the violence of war but portray the absurdity and anti-humanity of war itself. The Double Classics of September reflects on the violence of war in modern times through films. How do we fight and persist for life and dignity?



The Grand Illusion (La Grande Illusion)

Jean RENOIR | France | 1937 | DCP | B&W | 114min | French | CH&EN Subtitles

9.11 Sun. 16:30 • 9.15 Thu. 16:30 • 9.24 Sat. 21:00 • 9.28 Wed. 19:00



Paths of Glory

Stanley KUBRICK | USA | 1957 | DCP | B&W | 88min | English | CH Subtitles

9.11 Sun. 19:00 • 9.22 Thu. 18:50 • 9.30 Fri. 18:10

9.3 Sat. 10:30, 14:30 Jihde Hall**[Ju Percussion Group 2] 2022 Baby Bean Children's Concert: Percussion Planet**

- ▶ Presented by Ju Percussion Group Foundation
- ▶ Performed by Ju Percussion Group 2
- ▶ Tickets: NT\$400, 600, 800, 1000, 1200
(Please refer to the OPENTIX Ticketing System)
- ▶ Tel: 02-28919900#258



Percussion planet is inhabited by Poker Face General, Percussive Knight, and musical elves, and the Baby Bean who is good at percussion also makes a lot of new friends there! When he returned to Earth, he found that the telescope was not working! How will the Baby Bean overcome the difficulties?

9.4 Sun. 14:30 Jihde Hall**The Emperor's New Clothes**

- ▶ Presented and performed by Guyin Galaxy Children's Theater
- ▶ Tickets: NT\$300, 400, 500, 600, 800, 1000, 1200
(Please refer to the OPENTIX Ticketing System)
- ▶ Tel: 02-25592766



The king, who loved to wear new clothes, called in two tailors. They guarantee that they can make the most beautiful clothes in the world, and only wise and hardworking people can see them! On the day of the parade, people crowded the streets to see the king's new clothes, but the king had nothing on him!

9.4 Sun. 19:00 Jihshan Hall**String of Hope 10th Anniversary Concert**

- ▶ Presented and performed by String of Hope and String of Hope
- ▶ Tickets: NT\$300, 500, 800, 1500
(Please refer to the OPENTIX Ticketing System)
- ▶ Tel: 0905-705259



The concert will feature classical music, Taiwan pop music, Jewish folk music and animation music. The children, young as they are, can make amazing music through their fingertips!

9.10 Sat. 14:30, 19:30 Jihde Hall**Grandma and Her Ghosts**

- ▶ Presented by Spring River Performing Arts Troupe and udnFunLife
- ▶ Performed by Spring River Performing Arts Troupe
- ▶ Tickets: NT\$400, 500, 700, 900, 1200, 1500, 1800, 2000, 2200, 2500
(Please refer to the TixFun Ticketing System)
- ▶ Tel: 02-23771116



The mischievous Dou Dou is grounded by his mother at his grandmother's house for his prank. Dou Dou accidentally tore off the charm, which made the monster attached to the black cat in grandma's house. The black cat told him that as long as he collected three drops of grandma's tears, he could leave the place forever....

9.17 Sat. 15:30, 9.18 Sun. 15:30 Jihde Hall**KSO Family Concert-The Little Train of Courage**

- ▶ Presented by Bureau of Cultural Affairs, Kaohsiung City Government and Kaohsiung Philharmonic Cultural & Arts Foundation
- ▶ Performed by Kaohsiung Symphony Orchestra
- ▶ Tickets: NT\$300, 500, 700, 900
(Please refer to the OPENTIX Ticketing System)
- ▶ Tel: 07-7436633



At this KSO Family Concert, Kaohsiung Symphony Orchestra and children's picture book artist Lai Ma jointly produced the classic "The Little Train of Courage: The Summer Trip of Santa". This concert will take children on a brave summer journey with the magic of the picture book and symphony music.

9.18 Sun. 19:30 Jihshan Hall**2022 Normantic Nostalgia in East Europe: Hsu Su-lan Violin Solo**

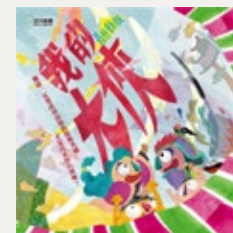
- ▶ Presented by Taiwan Yu Shan Symphony Orchestra
- ▶ Performed by Taiwan Yu Shan Symphony Orchestra, violin/Hsu Su-lan, piano/Thomas Yu-Tung Pan
- ▶ Tickets: NT\$500 (Please refer to the OPENTIX Ticketing System)
- ▶ Tel: 06-5705166, 0916-285562



Two musicians who studied in Europe selected concertos from many European romantic music school masters, such as works of Pancho Vladigerov of Bulgaria, Josef Suk of Czech Republic, Szymanowski of Poland, and Gabriel Fauré of France.

9.24 Sat. 14:30, 19:30 Jihde Hall**2022 My Superman (The most touching version)**

- ▶ Presented and performed by Bean Theatre
- ▶ Tickets: NT\$450, 550, 650, 800, 1000
(Please refer to the ERA Ticketing System)
- ▶ Tel: 07-5505596#18



A-sheng's grandpa was a chef, he could make good food with grandma, but also could tell tense and exciting chivalric adventure stories! After growing up, A-sheng took his children back to his hometown, and accidentally found the dusty superman costume, which was exactly the same as the superman in his childhood! My grandpa... Is it really a superman?

9.28 Wed. 09:30 Jihde Hall**Cheng-Kung Arts Festival**

- ▶ Presented and performed by Kaohsiung Lingya District Cheng-Kung Primary School
- ▶ Tickets: NT\$200, 500, 1000, 1500, 2000
(Please contact Cheng-Kung Primary School.)
- ▶ Tel: 07-3341882#120



The Cheng-Kung Arts Festival has been a tradition of the school for many years. It provides students with the opportunity to explore themselves and create art through a variety of media, stimulate their learning enjoyment and broaden their artistic horizons, thereby building their self-identity and confidence.

9.30 Fri. 19:30 • 10.1 Sat. 15:30, 19:30 •

10.2 Sun. 15:30 Jhinde Hall

Life of Office Men 7- Married Men

- ▶ Presented by GuoMingYuanRen CO., LTD.
- ▶ Performed by Funny No Problem Theater-Paul Tung, Kent Lin, A-Liang, Josh Lin; special guest-Wu Hua-en
- ▶ Tickets: NT\$450, 600, 800, 1000 (Please refer to the OPENTIX Ticketing System)
- ▶ Tel: 02-27791151

Content of performance: Art show short play, funny savior Manzai, basketball short play, Manzai, pet communicator short play, forgot-the-lyrics short play.



9.24 Sat. 14:00

A Warm and Precious Concert

- ▶ Performed by Love the Big Band
- ▶ Tickets: NT\$500, 800, 1000 (Please refer to the ERA Ticketing System)

COVID-19 has changed many people and things, and many things cannot be restored. The pandemic has taught us to cherish and understand the impermanence of the world. When we farewell friends, we are no longer as free and easy as when we were young. We should cherish and be grateful every time we meet our old friends.



Dadong Arts Center No. 161, Guangyuan Rd., Fengshan Dist., Kaohsiung City
07-7430011 dadongcenter.khcc.gov.tw

9.4 Sun. 19:30

Life is Like a Song: 2022 Red Clogs Choir Annual Concert

- ▶ Performed by Red Clogs Choir
- ▶ Tickets: NT\$300

Chen Wusiong, the head of the choir, always stressed that "if the lyrics cannot move me, they cannot be written." He set music to these poems that shone with the light of life. With beautiful sounds of the Red Clogs Choir, this concert will bring care and comfort to the people around the world who have suffered from disasters since 2020, and pray for a bright future.



9.10 Sat. 19:30

Implied Meaning: String of the Century

- ▶ Performed by Bremer String Orchestra
- ▶ Tickets: NT\$500, 800, 1000, 1200 (Please refer to the ERA Ticketing System)

Li Jhenyu of the Bremer String Orchestra and Yang Huigong of the Century Voice Choir will perform the classic opera melodies "Libiamo ne 'lieti Calici" and "Toreador Song" for the first time. In addition to classical music, the concert also features animated suites, folk songs and popular oldies, with a variety of repertoire to satisfy audiences of all ages.



9.17 Sat. 19:30 • 9.18 Sun. 14:30

Tree of Life II: Sea of Breath

- ▶ Performed by NKD ART Troupe
- ▶ Tickets: NT\$600, 800, 1000, 1200, 1600 (Please refer to the OPENTIX Ticketing System)

Conceived as "The War of Iron and Trees," the concert draws on the differences and conflicts within the peoples in the story to depict the contradictions that lurk in each person's heart. In the face of the conflict between the sustainability of the environment and development, how should people choose?



9.24-10.8 Exhibition Hall

The Publicness and Practice of Community College

This exhibition is about the publicness and practice of community colleges. Through the three-way dynamic relationship of people, action and public, this exhibition expounds the connotation and value of the public thought and practice of community colleges in the past 20 years. In addition, people may see that the teaching practice is based on public interests and combines education with entertainment, and responds to structural problems under neoliberalism, which is the social movement of daily life through the mode of openness, sharing and linking.

※ Opening hours: 10:00-17:00, Tuesday to Sunday, closed on Monday.



Outdoor Art Performance

Every Saturday from 17:00 to 18:00 at the outdoor stage of the center. Free admission.

Date	Performing Group	Activity Name
9.3	Jome Chamber Band	Hit Time with Jome
9.10	Kaohsiung City Wind Orchestra	Beautiful Mid-Autumn Festival
9.17	Taiwan Yuan-Yuan Indigenous Culture Troupe	How's It Going? !

Lobby Music Concert

Every Sunday from 11:00 to 12:00 at the lobby of the Performance Hall. Free admission.

Date	Performing Group	Concert Name
9.4	Artsblooming Ensemble	Classical Concerto for Viola
9.11	Finger Snapping Chamber Orchestra	The Flow of Melody
9.18	Smalls Jazz Combo	Love in Florence
9.25	KSO	Music Image