

RESONANCE ISLAND  
群島共振



8.5  
FRI.  
8.14  
SUN.

文化雅展  
Culture

高雄流行音樂中心  
KAOHSIUNG  
MUSIC CENTER

8.10  
Wed.  
8.14  
Sun.

文創品牌 + IP授權  
Creative + Licensing

高雄展覽館  
KAOHSIUNG  
EXHIBITION CENTER

# **Art, culture and innovation gather in the Asia New Bay Area to showcase the abundant cultural and creative energy of the port city!**

Nearly a century ago, the Taiwan Expo during the Japanese rule period opened up the vision of Taiwan's modernization and showed the most dazzling and representative things to the world, which was the beginning of design for Taiwan. In 1931, the "Kaohsiung Harbor Exhibition" was held in Hamasen and Yancheng to celebrate the completion of Kaohsiung City Hall and promote the achievements of Kaohsiung. It showed the modern appearance of Kaohsiung and the progress, prosperity and infrastructure of Kaohsiung City. It also catalyzed the sense of place. One hundred years later, we will also launch a three-month series of design-related activities with the same location as the center and the 38 administrative districts of Kaohsiung, to actively demonstrate the characteristics and vision of Kaohsiung City to the world.

In August, Creative Expo Taiwan, the largest cultural and creative event in Asia, which combines cultural exhibitions, creative brands and IP licensing, will be held in Kaohsiung instead of Taipei for the first time in 11 years. When Creative Expo Taiwan meets the most beautiful harbor Asia New Bay Area, we will once again show the broad vision of Kaohsiung and its passionate character to the world by launching a series of refreshing exhibitions on urban development and design.

Taiwan is an island of diversity and harmony. You and I are all islanders. This Creative Expo Taiwan "Resonance Island" reveals that all things are connected and symbiotic, and we can experience and create from them. Culture is led by experience, which is simple but magnificent, and profound but immortal.

The exhibition will present the importance of culture and art to urban design and the daily life of citizens over the past 90 years, and how design has changed Kaohsiung's urban aesthetics bit by bit. Preparatory work is under way at present. We look forward to showcasing the creative energy of Taiwan and its port cities again this summer.



## Shape of Hope Taiwanese × Japanese Designers' Joint Exhibition 5.6-10.30

Dayong Warehouse C5

Does Hope have a shape? What is the shape of hope? People need hope. Hope can give people strength and belief in an ideal future, so hope leads us to a better direction.

A total of 27 creators and designers from Taiwan and Japan are using three forms of praying -- paper cranes, divination blocks, and graffiti walls -- to show the shape of hope in arts.

In 2022, with the spread of the mutant virus and the outbreak of war, we all need hope. "Hope" guides the direction of life and gives us strength to move forward. We hope to take this opportunity to invite visitors to make a wish together!

We often expect many things from life and have many different decisions on one thing. However, when we make a choice, we are afraid of whether it is right. We are often confused about the future, hesitating and uneasy at the crossroads of hope, so we rely on faith and want to gain confidence from it.

"Buei" is our channel to the gods, giving us direction and the power to settle down. The "Shape of Hope: Buei" in the exhibition takes "buei", a religious object symbolizing prayer in Taiwan, as the theme. Six architects, designers, and artists are invited to use composite materials to shape the firm hope in their hearts.





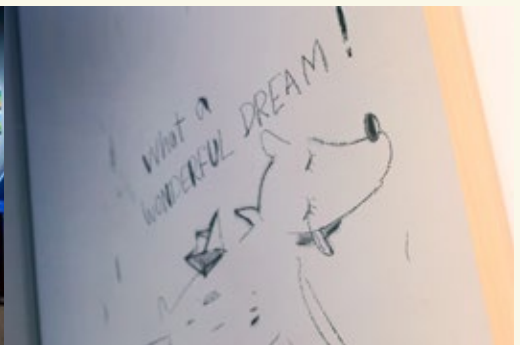
## The Illustrators' Cosmic Voyage

4.15-8.21

Dayi Warehouse C7: A.C.G.N. Warehouse

With the rapid development of the digital era, illustrators have developed from hand-drawing on paper and various media to digital drawing, 3D modeling, and dynamic images. In recent years, NFT works produced by blockchain shine brilliantly in the art market and become a trend among creators.

"The Illustrators' Cosmic Voyage" is like a Taiwanese illustrative exploration spaceship constantly updated with media platforms. Creators become navigators, using abundant measures to present a boundless imagination world through the application and combination of various media materials, and to search for the possibilities of the metaverse.





Opera

# 蝴蝶夫人

7/11 Fri.  
19:30  
Puccini  
Madama Butterfly

7/13 Sun.  
14:30



DIRECTOR:  
Matthew Barclay

CONDUCTOR:  
Yang Chih-Chin  
Kaohsiung Symphony Orchestra

*Fearless for Love*

An empty but gorgeous foreign love story  
In Italian, with Chinese subtitles

STARRING



Lin Ling-Hui



Richard Troxell



Wu Bai Yu-Si



Weng Jo-Pei



Lo Jun-Ying



Chang Yin-Chi



Wang Yu-Sin



Li Zeng-Ming



Sie Ming-Mou

Opera House,  
National Kaohsiung  
Center for the Arts  
(Weiwuying)

Tickets: NT\$ 500 . 900 . 1200 . 1600 . 2000 . 2500 . 3000 . 3500

Tickets via OPENTIX  
兩廳院文化生活

Presented by 高雄市政府文化局  
財團法人高雄市愛樂文化藝術基金會  
Kaohsiung Philharmonic Cultural & Arts Foundation

Special thanks to

Sponsored by LASER-TEK  
雷射科技股份有限公司



2022

7.9 19:30 Sat. 7.10 14:30 Sun.

## Dadong Arts Center

Tickets via  OPENTIX

Tickets: NT\$ 2500、2000、1500、  
1200、900、600、300

Starring

**Chen Zhao-Xiang**

**Chen Li-Qiao,**

**Chen Jin-Xing**

**Sun Shih-Wen**

**Wu I-Hsuan**

Special guest

**Cheng Chih-Yun**

"Finding a general is easy. But you have no second chance to find one like Han Xin."

— Biography of the Marquis of Huaiyin,  
Records of the Grand Historian

### A loyal official or a traitor?

Han Xin won every war. He killed Xiang Yu, established great credit, but was miserably killed by his lord! Han Xin was loyal to the king because of a meal. Would he betray his lord? People felt sad for his experience!

### A wise lord or a mighty one?

Liu Bang had extraordinary political power and exerted all efforts to continue the Han Dynasty. Was he really a heartless Machiavelli?

### A wise empress or an unmerciful woman?

Empress Lu, the first famous empress in history, made remarkable achievements in governing the country. As a rich young lady married to a gangster, she was abducted, and enthroned her son. How did the most ruthless empress in history fight the mistress?

**Under the chaotic generation, the harem struggle reflects the unpredictability of people!**



Remake of a 1960s radio Taiwanese opera masterpiece  
with murder story and real raining scene



# 望鄉之夜

## The Homesick Night



The event has been postponed.

I miss home but can't go back,  
as the world is fickle and spring is gone.

2022

# 7.22-24

Fri.-Sat. 19:30 Sun. 14:30

## Dadong Arts Center

Special guest **Jhao Mei-Ling**

Starring **Jhang Meng-Yi, Gu Yi-Fan,  
Jiang Ting-Ying, Wang Tai-Ling, Liao Yu-Ci**

"The Homesick Night," also known as "Buried Alive," is a popular play in the 1960s when Taiwanese opera theater and radio were trending.

Han Li-Mei and Jhu Sian-Zong were in love with each other and engaged, but fate broke them up. Because the duke's daughter Jhao Fu-Rong liked Jhu by accident, and asked the emperor to grant marriage, Jhu was forced to marry Jhao. Jhao found that Jhu had a girlfriend after marriage. She was so jealous that she killed the mother of Han and buried Han alive. Han narrowly escaped death and got help from a nobleman. She then changed her name, dressed up as a man, and practiced gongfu to get revenge.... Hatred can be avenged, but what about past love?

With the spirit of "refining the traditions and applying the classics to the modern stage," the Shinrun Taiwanese Opera Troupe has remade the old plays, hoping that today's Taiwanese opera audience can also feel the feelings of ecstasy, happiness, sadness and regret of the old fans.

Tickets: NT\$ 300 500 700 900 1500 2000 2500

Tickets via OPENTIX 02-3393-9888

Shinrun Taiwanese Opera Troupe Tel: 02-2812-2121#13



2022

# 真愛秀

## 大凱廳

**VENUE** Performance Hall  
Kaohsiung Music Center

**HOST** 主持人  
Chao Da-Lun &  
Chang Hsiu-Ching

1975

### 7.30

Sat. 18:30

**SINGER**

- Huang Fei
- Long Qian-Yu
- Tsai Hsiao-Hu
- Lotus Wang
- Tseng Hsin-Mei
- Monique Lin

Sun. 18:30

### 7.31

**SINGER** ★

- Chris Hung
- Linda Lee
- Long Qian-Yu
- Tsai Hsiao-Hu
- Ric Jan
- Chen Mei-Fen

True Love Show · Sapphire Grand Show

# 真愛秀 KAOHSIUNG

2022

## National Historic Site: Jhuzimen Hydro Plant

Jhuzimen Hydro Plant is now the Jhumen Unit of Kaohsiung/Ping-Tung Power Plant of Taiwan Power Company, formerly known as Jhuzimen Hydro Plant. It was built in 1908 to generate power for the machinery and power demand for construction of Port of Kaohsiung and Hamasen reclaimed land project. As the first-generation run-of-river hydroelectricity generation plant, it is also the most complete hydropower plant in the Japanese era, and was designated as a national historic site in 2003.

The power plant is located at Jhuzimen, Meinong District and generates power with the Laonong River. The power plant uses a drop of 21.3 meters to build multiple dams and diversion channels to divert the water stream to the front pool. Then, with a drop of 70 degrees, four pressure steel pipes with a diameter of 1.5 meters and a length of 66.65 meters are used to introduce water into the indoor substation on the ground to generate electricity with four sets of Francis turbines.

The establishment of the Jhuzimen Hydro Plant is an important driving force for the development of the city. The electricity provided by the plant is used to build the Kaohsiung Port and make Kaohsiung a modern city. Abundant electricity made Kaohsiung a magnet for investment in industries such as sugar, cement and steel during the Japanese rule. More importantly, the power plant's water is fed into the Meinong Shizitou Irrigation System, which is used to irrigate more than 4,000 hectares of farmland in the Meinong region, turning wasteland into good farmland.





# LUMIÈRE

2022 5.21-9.18 | Kaohsiung Museum of Fine Arts

THE ENLIGHTENMENT AND SELF-AWAKENING OF TAIWANESE CULTURE

The four exhibition sections of “Impulse of Life,” “The Creation of Landscape,” “The Public and the Modern,” and “Self-Awakening Modernity” serve as points of departure that guide the viewers to explore from the inside outward, and to contemplate ways in which these artists began from self-observation to burst forth and chronicle society through their works, depicting the integration and resistance between the individual and society. Meanwhile, the “Contemporary Revisits” segment has been developed in collaboration with contemporary art practitioners to uncover and perform the past. While showcasing the history of Taiwan through diverse approaches, this exhibition also attempts to incorporate contemporary artistic perspectives in its reaching back to the past.



Do you know that railways have a history of more than 100 years in Taiwan? We welcome you to visit the Hamasen Museum of Taiwan Railway.

Zhunghua Shopping Yard used to be the largest public shopping mall in Taipei. Zhunghua Shopping Yard was built beside the railway in 1961. Before the northbound train entered Taipei Station, the Zhonghua Shopping Yard standing beside the railway was the first impression of all the travelers when they first saw the prosperous and modern scene of Taipei. In the 1980s, with the eastward movement of Taipei's commercial center and the rapid change of the consumption pattern, the old Zhunghua Shopping Yard and the Western district business district gradually declined. In 1989, the railroad on the west side of the mall went underground, but it failed to improve its old and dirty appearance. Finally, with the urban development, it was completely demolished on October 20-30, 1992, leaving only historical memories. The picture shows the model of the busy appearance of Zhunghua Shopping Yard and the surrounding Zhonghua Road inside the Hamasen Museum of Taiwan Railway.



Hamasen Pier 2 Line is located at Penglai Warehouse in The Pier-2 Art Center. It was the first fixed five-inch gauge railway in Taiwan. Each carriage of the train can hold 300 kg and is suitable for adults and children. It takes about six minutes to circle the art center on the "Circular Light Rail." The special experience is very popular among tourists.

#### Ticket Information

**Hamasen Museum of Taiwan Railway**  
 Regular: NTD149  
 Concession: NTD99

**Hamasen Pier2 Line**  
 Regular: NTD149  
 Concession: NTD99

#### Opening Hours

Mon. to Thu.: 10:00 to 18:00  
 (Ticket sale ends at 17:30.)

Fri. to Sun.: 10:00 to 19:00  
 (Ticket sale ends at 18:30.) Closed on Tue.

(07)521-8900 Warehouses B7 & B8, Penglai Warehouses, The Pier-2 Art Center  
 (No. 99, Penglai Rd., Gushan Dist., Kaohsiung City)



## Alternative Love Stories in *Lost in Translation* and *Eternal Sunshine of the Spotless Mind* Taiwanese Romantic Musical Dialogue in *Dust of Angels*

The July Double Classic unit of Kaohsiung Film Archive makes *Eternal Sunshine of the Spotless Mind* and *Lost in Translation* resonate the most metaphysical loneliness and contentment of us in the bottom of the memory box. It's all about love.

The end of 1980s to the end of 1990s was a mature period for the development of the new Taiwanese song movement, which was closely related to the Taiwanese films at that time. From *Dust of Angels*, *Goodbye South, Goodbye to Treasure Island*, you can see the sheer black and wild of Taiwanese rock music. We invite music lovers to rediscover the madness and fragility of cinema through the music of the film in July.



### Eternal Sunshine of the Spotless Mind (Restored)

© Michel GONDROY

7.10 Sun. 19:40 • 7.16 Sat. 18:50 • 7.24 Sun. 18:40  
 7.28 Thu. 20:40 • 7.30 Sat. 16:30 • 7.31 Sun. 17:30



### Lost in Translation

© Sofia COPPOLA

7.09 Sat. 18:20 • 7.17 Sun. 15:40 • 7.23 Sat. 19:40



### Dust of Angels (4K Restored Version)

© HSU Hsiao-Ming

7.08 Fri. 18:20 • 7.09 Sat 13:30 • 7.10 Sun. 13:30  
 7.12 Tue. 18:40 • 7.13 Wed. 16:00 • 7.14 Thu 18:00  
 7.15 Fri. 20:30 • 7.16 Sat 13:30 • 7.20 Wed.18:00  
 7.21 Thu. 20:40 • 7.22 Fri. 18:30 • 7.23 Sat. 13:30  
 7.27 Wed. 19:00 • 7.28 Thu. 14:00



### Goodbye South, Goodbye

© HOU Hsiao-Hsien

7.23 Sat. 17:00



### Treasure Island © CHEN Kuo-Fu

7.24 Sun. 16:20

**7.1-7.12** Jhih-Jhen Gallery-1

## The Realm of the Sustained Concentration and the Torrent of the Consciousness

This joint exhibition combines the unique thinking and narrative perspectives of seven artists to reflect on their inner voices, stimulate self-awareness and create paintings of different ideological forms of the current mainstream society.

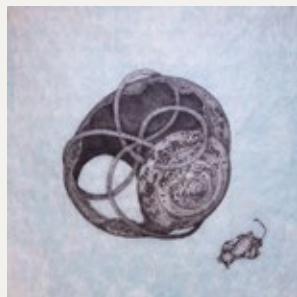
The artists focus on creating a flood of consciousness in a series of works that connect the virtual and the real.

The seven artists, Luo Shufang, Peng Siangqi, Lin Jinping, Hong Jinshu, Li Jiayan, Lai Yumin, Jhang Syufan, are all masters of the Department of Arts at Kaohsiung Normal University.

**7.29-8.9** Jhih-Jhen Gallery-2

## Apocalypse - Taiwan International Printmaking Exchange Association Exhibition

Since ancient times, Chinese people have valued harmony between heaven, earth and human beings. The revelation brought by oracles brings people infinite imagination about themselves, society and even the natural environment. The Book of Revelation in the Bible further foreshadows the future of mankind. The artist connects the inner spiritual and social atmosphere, constructs the inner Apocalypse through the different techniques and the paradigm transfer of codes, and starts a series of self-narration of prophecy.

**7.22-8.2** Jhih-Mei Gallery

## Joint Exhibition of Kaohsiung City Lingnan Art Society Members

It has been 33 years since our establishment in 1989. Lingnan art integrates the techniques of Chinese painting, Japanese painting and Western painting to create a refreshing style with bright colors, moist and flawless dye.

**7.22-8.2** Jhih-Jhen Gallery-3

## Horizons of Art Quilts

Artists from nine countries have been invited to present 59 works. This exhibition introduces visitors to the quilt style and the meanings that the work implies. Artists use needle and thread as brushes and cloth pieces as pigment, combining embroidery, printing and dyeing, weaving and other techniques to create colorful creations.

**OPENING HOURS** | Exhibition Room: Tue.-Thu. & Sun. 10:30-17:30; Fri. & Sat. 10:30-20:00; closed on Mon.  
Exhibition Corridor: Tue.-Sun. 09:00-21:00; closed on Mon.

**6.15-7.15** Exhibition Corridor

## Open the Memory Box of Gangshan

Through the narration and translation of local people's memories, the exhibition connects the common emotions of different generations and ethnic groups, and creates memories, participation and empathy for Gangshan.



**6.22-7.3** Exhibition Room

## Journey • Kaohsiung Government Staff Oil Painting Club Exhibition

The Kaohsiung Government Staff Oil Painting Club is composed of staff who love oil painting. Under the guidance of teacher Hu Shuying, the club has made a lot of achievements.

In the pandemic era, people need to be more optimistic and in a good mood. The creators of this exhibition use oil paint to record their travel memories and depict the mood at that time, to feel better in the lockdown.



**7.6-7.17** Exhibition Room

## Hong Limei Ink Painting Solo Exhibition - Flying Color Ink

Painting is Hong Limei's interest and dream. She has been studying ink painting for more than 20 years, and she is good at freehand brushwork color ink, ink painting, landscape, flowers and birds, etc. She outlines the spirituality of nature, enriches her life experience and shares the beauty of ink art with people.



**7.20-7.31** Exhibition Room and Exhibition Corridor

## Kaohsiung Jingjing Garden Calligraphy Society - Good Time Calligraphy Exhibition

Originating from the calligraphy academy founded by Wu Yuntan in 1987, the society has held more than 20 calligraphy exhibitions and was officially established in 2020. The first exhibition will be held in Gangshan Cultural Center near the teacher's birthplace. We hope to communicate with you through calligraphy.



**7.9 Sat. 19:30 • 7.10 Sun. 14:30**  
**Guo Shi Wu Shuang**

- ▶ Performed by Ming Hwa Yuan "Tian" Taiwanese Opera Co.
- ▶ Tickets: NT\$300, 600, 900, 1200, 1500, 2000, 2500 (Please refer to the OPENTIX Ticketing System)

Han Xin won every war. He killed Xiang Yu, established great credit, but was miserably killed by his lord! Han Xin was loyal to the king because of a meal. Would he betray his lord? People felt sad for his experience!

Liu Bang had extraordinary political power and exerted all efforts to continue the Han Dynasty. Was he really a heartless Machiavelli?

**7.13 Wed. 19:30**  
**2022 Cisian Junior High School**  
**Orchestra Annual Concert**

- ▶ Performed by Cisian Junior High School
- ▶ Tickets: NT\$200 (Please refer to the ERA Ticketing System)

The orchestra has become an important feature of Cisian Junior High School, and the annual concert held in the graduation season has become an important musical activity of the school. We would like to express our sincere thanks to the teachers and students of Cisian Junior High School as well as the audience for their presence and encouragement.

**7.14 Thu. 19:00**  
**Fengjia Junior High School Concert**

- ▶ Performed by Fengjia Junior High School
- ▶ Free admission with tickets

The first half of the concert will feature the string orchestra, which shows students' achievements in the past two years. Then comes the performance of the seventh-grade percussion band, which shows the shy and unrestrained youth. Finally, the seniors of eighth grade will lead the ensemble performance, which means passing on the tradition.

**7.17 Sun. 19:00**

## **KYSO 2022 Concert**

- ▶ Performed by Kaohsiung Youth Symphony Orchestra
- ▶ Tickets: NT\$200 (Please refer to the ERA Ticketing System)

Hsin Hsing Senior High School Music Class (Junior Branch) aims to develop its orchestra to become the most outstanding youth symphony orchestra representing Kaohsiung City. As the orchestra is the cradle of musical talents in the city, enhancing the performance of its members through training has far-reaching educational value for young students.

## **7.22 Fri. 19:30 • 7.23 Sat. 19:30 • 7.24 Sun. 14:30** **The Homesick Night**

*The event has been postponed.*

- ▶ Performed by Shintrun Taiwanese Opera Troupe
- ▶ Tickets: NT\$300, 600, 900, 1200, 1500, 2000, 2500 (Please refer to the OPENTIX Ticketing System)

Han Li-Mei and Jhu Sian-Zong were in love with each other and engaged, but fate broke them up. Because the duke's daughter Jhao Fu-Rong liked Jhu by accident, and asked the emperor to grant marriage, Jhu was forced to marry Jhao. Jhao found that Jhu had a girlfriend after marriage. She was so jealous that she killed the mother of Han and buried Han alive. Han narrowly escaped death and got help from a nobleman. She then changed her name, dressed up as a man, and practiced gongfu to get revenge....



## **Outdoor Art Performance**

Every Saturday from 17:00 to 18:00 at the outdoor stage of the center. Free admission.

Date	Performing Group	Activity Name
7.2	Bean Theatre	The Bean House Series: The Cabin in the Woods
7.9	Finger Snapping Chamber Orchestra	A Lazy Afternoon Mambo
7.16	Kiling Indigenous Cultural Arts Troupe	Harvest Song
7.23	Miracle Flutestars	A Date With Flute
7.30	Star Wish Ukulele	Star Wish

## **Lobby Music Concert**

Every Sunday from 11:00 to 12:00 at the lobby of the Performance Hall. Free admission.

Date	Performing Group	Concert Name
7.3	Annier ft. Mio Ukulele	Summer Evening Breeze
7.10	Dominant5 Chamber Ensemble	The Movie World of Piano Quintet
7.17	Lee Shang-Hsuan	Classics and Pop Music 2
7.24	Kaohsiung Symphony Orchestra	"Crazy Summer Harp" Harp Trio
7.31	Kaohsiung Symphony Orchestra	BBBass